

L Series

Electromechanical
Universal Testing Machines

LS0000EN03

SDL ATLAS

L Series

The L Series of electromechanical testing machines from Tinius Olsen is designed to test a wide range of materials including, but not limited to: plastics, films, paper, packaging materials, filter material, adhesives, foils, food, toys, medical devices and components, in tension, compression, flexure and peel.

Testing machines are available in frame capacities of 1kN, 5kN, 10kN, 25kN and 50kN and are combined with a variety of grips and fixtures, extensometers and software to provide standard testing systems for a variety of applications.

At the heart of each system is the testing machine. Building on the quality and technology that is built into all Tinius Olsen machines, we have developed the L Series of machines that communicate directly with a standard PC via a high speed RS232.

Robust construction of the loadframes comprising oil soaked precision leadscrews, high precision ball race bearings, high grade material for crossheads and current electronics, combined with our years of experience in machine construction results in these superior testing machines.

Flexibility and simplicity of use is also built into the design of these machines. Each machine features rapid change Z beam loadcells that allow quick and easy capacity reduction to an appropriate capacity for the test. These loadcells have a measurement accuracy of +/- 0.5% of the applied load, from 2-100% of the loadcell capacity.

Each machine also features rapid grip change capability: a simple pinning technique means that the gripping fixtures can be changed for different test configurations extremely rapidly and easily.



**Single column Model
H1kL & H5kL**



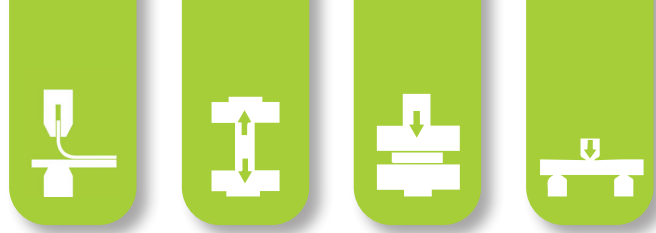
**Twin column Models
H10kL, H25kL & H50kL**

Featured upgrades

- USB connectivity
- Sunken power connector to ease service
- Protective screen supporting panels on sides
- Air piped inside the machines to bottom and upper crossheads for supporting pneumatic fixtures

The Tinius Olsen L Series of mechanical testing systems provide the simplicity, performance and affordability needed for quality control and product testing.

From routine, standardized QC/QA tests to general purpose mechanical testing, the L Series is Tinius Olsen's best value solution for the modern laboratory or school.



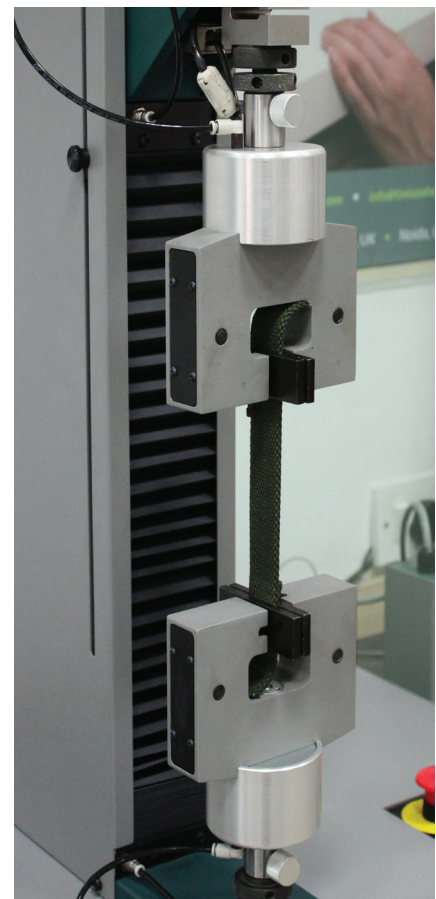
SPECIFICATIONS		1kL	5kL	10kL	25kL	50kL
Capacity	kN	1	5	10	25	50
	lbf	200	1000	2000	5000	11,000
Test speed range	mm/min	0.001-1000 up to 500N, 0.001-500 up to 1kN	0.001-1000 up to 2500N, 0.001-500 up to 5kN	0.001-1000	0.001-1000	0.001-500
	in/min	0.00004-40 up to 100lb 0.00004-20 up to 200lb	0.00004-40 up to 500lb 0.00004-20 up to 1,000lb	0.00004-40	0.00004-40	0.00004-20
Clearance between columns	mm	n/a	n/a	410	410	405
	in	n/a	n/a	16	16	16
Throat depth	mm	200	200	n/a	n/a	n/a
	in	8	8	n/a	n/a	n/a
Max crosshead travel	mm	750	750	1100	1100	1100
	in	29.5	29.5	43	43	43
Dimensions (HxWxD)	mm	1140 x 490 x 450	1140 x 490 x 450	1600 x 650 x 450	1600 x 650 x 450	1613 x 720 x 500
	in	46 x 20 x 18	46 x 20 x 18	64 x 29 x 20	64 x 29 x 20	64 x 29 x 20
Weight	kg	50	50	115	120	140
	lb	101	101	287	287	310

NOTES

- Load weighing system meets or exceeds the requirements of the following standards: ASTM E4, ISO 7500-1, and EN 10002-2. Tinius Olsen recommends that systems are verified at installation in accordance with ASTM E4 and ISO 75001.
- Strain measurement system meets or exceeds the requirements of the following standards: ASTM E83, ISO 9513 and EN 10002-4.
- Specifications are subject to change without notice.

Key features

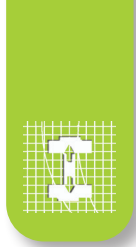
- Suitable for tension, compression, flexure, shear and other tests to a maximum force of 50kN/11,000lbf.
- Primary system interface is a PC running Tinius Olsen's Horizon Data Analysis software connected via RS232.
- System features local Jog Up, Jog Down and Stop buttons so the crosshead can be positioned for easy specimen loading.
- Meets or exceeds the requirements of national and international standard for materials testing systems.



OPTIONS AND ACCESSORIES

- Grips and fixtures can be easily mounted securely with a locking pin, which also allows simple and rapid changes
- Precision extensometers and deflectometers are available using encoder, strain gauge and/or LVDT technologies
- Safety enclosures with interlocks can be installed to protect operators from violent specimen breaks

Software



Tinius Olsen has built upon its long history of providing solutions to an enormous variety of testing problems to develop Horizon, a comprehensive software program that makes testing simple, precise and efficient.

Whether the test sample is metal, paper, composite, polymer, rubber, textile or a micro-component, Tinius Olsen's Horizon software goes far beyond data collection and presentation. It will help automate operations, from R&D to the charting and analysis of QC testing.

Our Horizon software sets new standards of data analysis by adding a host of report writing and data manipulation capabilities that will make easy work of your materials testing programs. As with most features of Horizon, flexibility is key; reports can be customized by operators in any way they wish, as can all user screens, allowing operators to focus on features that are most important to them.

In addition to powerful reports, Horizon Materials Testing software is networkable and scalable so that operators and managers can operate equipment and review test results from multiple sources and locations. Horizon provides a library of standard, specific, and application-focused test routines that have been developed in close co-operation with customers around the world and to the standards they are using.

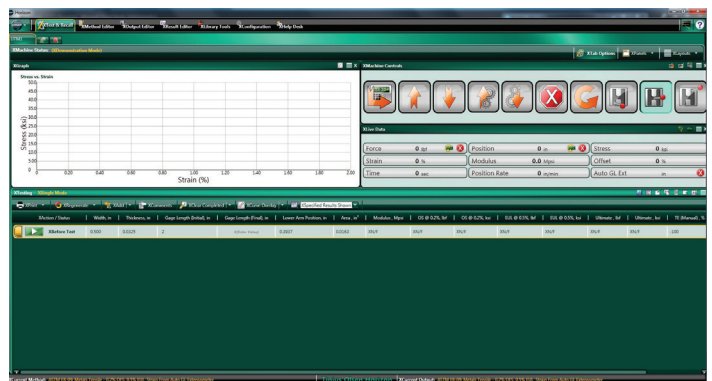
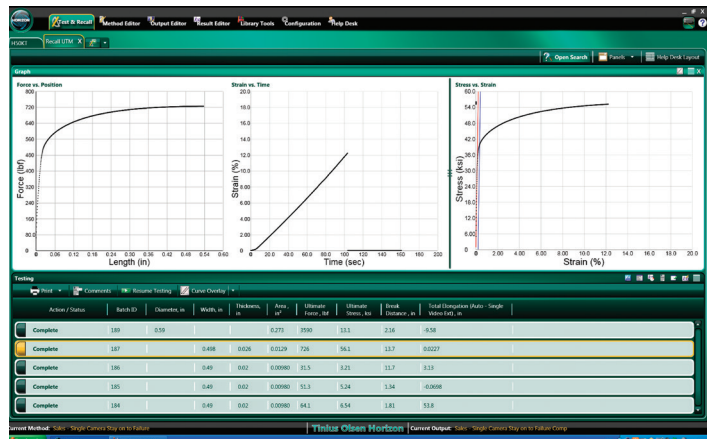
Among the many valuable features offered by Horizon are: a test routine library; simultaneous multiple machine control; test, output, method and result editors; and multilayered security. This software is designed for data acquisition, data analysis, and closed loop control of nearly all Tinius Olsen testing machines.

Horizon is rich with capabilities that improve productivity and enable you to build, access and use a modern, powerful materials testing database. It employs the latest Windows environments, running on touchscreen-enabled monitors, to create an intuitive user experience.

Built-in tutorials, online help, and help desk access provide additional user support.



“Horizon makes testing simple, precise and efficient”





L Series

Electromechanical
Universal Testing Machines

www.sdlatlas.com

info@sdlatlas.com

• **SDL ATLAS LLC**
3934 Airway Drive
Rock Hill, SC 29732-9200, USA
Telephone: +1 803 329 2110
Facsimile: +1 803 329 2133
Website: www.sdlatlas.com

• **SDL ATLAS LTD.**
1B, Building B, JunXiangDa Mansion,
No. 9 ZhongShan Park Road, Nanshan,
Shenzhen 518052, China
Telephone: +86 (755) 2671 1168
Facsimile: +86 (755) 2671 1337
Website: www.sdlatlas.com

• **SDL ATLAS LTD.**
3J, Garment Centre, 576 Castle Peak Road,
Kowloon, Hong Kong.
Telephone: (852) 3443 4888
Facsimile: (852) 3443 4999
Website: www.sdlatlas.com

SDL
ATLAS