



# FLAMMABILITY TESTERS

For International Flammability Regulations

# Flammability Testing

Flammability testing is the principal way to determine how easily a material or finished product will ignite or burn when placed or used in close proximity to fire or heat.

SDL Atlas offers a wide range of instruments to meet flammability testing needs and has experts ready to assist with choosing the correct instrument, accessories, and test materials necessary for precise, standard compliant flammability testing.

## AutoFlamm Flammability Tester

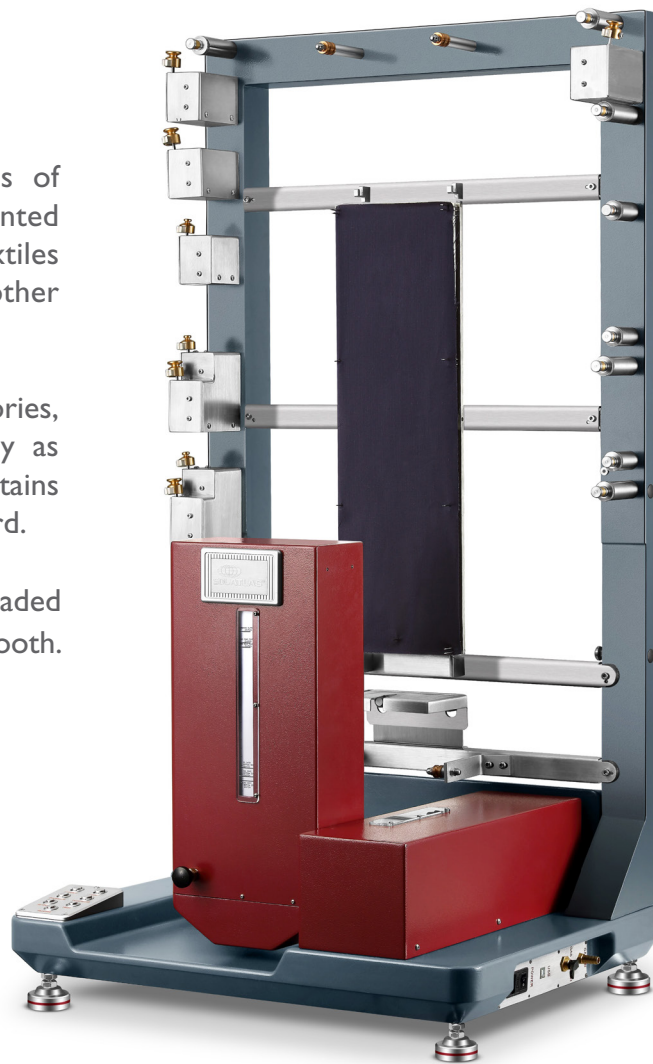
The AutoFlamm Flammability Tester meets the needs of those testing general apparel fabrics and vertically oriented fabrics to European standards. These include home textiles such as curtains or drapes, bedding, table clothes and other items that hang down from furniture.

As each standard calls for a variety of different accessories, burners and configurations, these are quoted optionally as required. The Optional Radiator Assembly for testing curtains and drapes is designed for testing to the EN 13772 standard.

All test results are included in test reports which are uploaded directly to the computer connected via either USB or Bluetooth.

## Complies to EU Toy Safety: EN 71-2

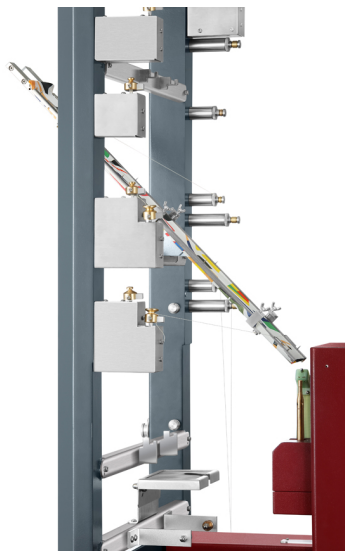
The AutoFlamm has been purposefully designed to meet EN 71-2 Safety of toys - Part 2. The burner tip can be easily adjusted to meet the different configurations required to fully meet the various parts of the standard including vertical oriented for parts 5.2 and 5.4 and 45° inclination for parts 5.3 and 5.5.



EN 71-2, section 5.2



EN 71-2, section 5.3



EN 71-2, section 5.4



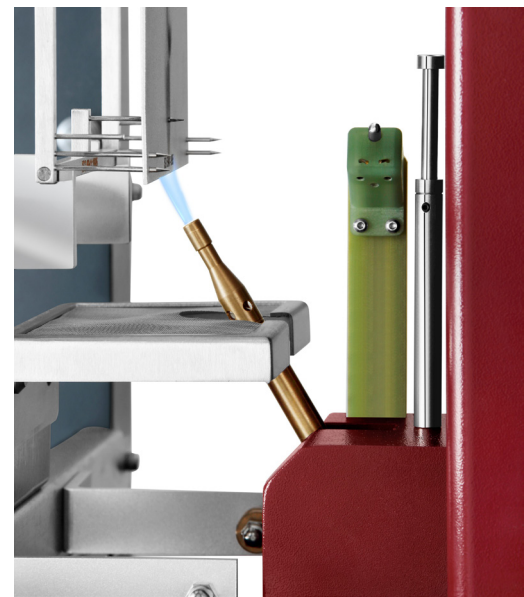
EN 71-2, section 5.5

# AutoFlamm Features

- Automated with a motor driven burner tip and micro switches that are activated by trip threads
- Burner tip motion regulated via motorized control allowing for Up/Down, Forward/Backward, and Rotating Angles (Surface, 30° Bottom edge, 45° and Vertical)
- Motor driven gas burner
- Burner fires through automatic gas ignition
- Auto positioning of burner ensures testing precision

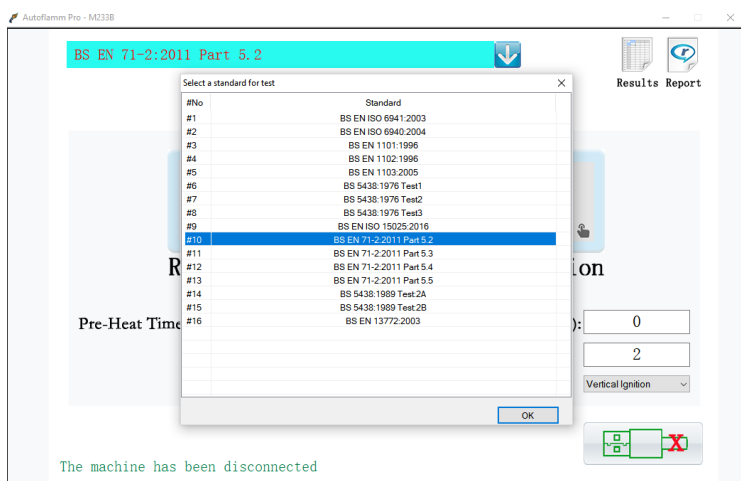


- Revolutionary clamp design for mounting the thread easily and holding it firmly in place
- Able to quickly and easily reconfigure to a wide range of interchangeable precision test frames and burners
- Controlled via Computer or Tablet rather than separate control unit
- Intuitive and easy to use PC software provided. Connect the AutoFlamm by USB cable or via Bluetooth (wireless)



30° Bottom Flame Configuration

- Most popular standards and routines are preprogrammed into the software



Surface Flame Configuration

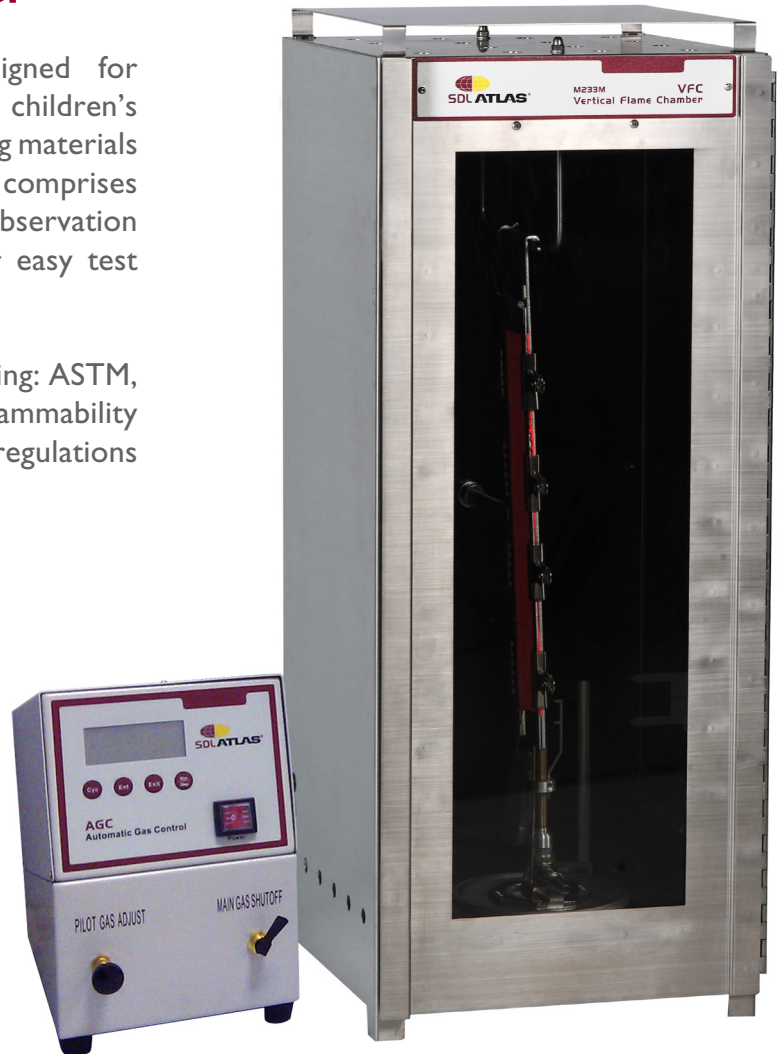
## Vertical Flammability Tester

The Vertical Flammability Tester was designed for measuring the vertical flame spread for children's sleepwear, fabrics, other textiles, or resilient filling materials used in upholstered furniture. The instrument comprises a draft free stainless steel cabinet with glass observation panel window and back wall painted black for easy test viewing.

Designed to meet international standards including: ASTM, CFR, GB and California TB, the Vertical Flammability Chamber meets all major USA flammability regulations for testing fabric flammability.

The instrument has a separate enclosure for manual gas controls that is located away from the flame chamber.

**Optional Automatic Gas Control** system including solenoid control gas valve and automatic ignition timer and controls.



## 45° Automatic Flammability Tester

Used to determine the burning characteristics of textiles under controlled conditions, the 45° Automatic Flammability Chamber automatically times the flame spread in 0.1 second increments from ignition.

The time starts when the flame impinges and stops when the sample's trigger string burns through. The flame burns at a 45° angle under controlled flame-impingement at the tip of a stainless steel hypodermic needle with automatic flame impingement times of 1, 5 or 20 seconds available.

The flame-impingement and sample holder are contained within a stainless steel testing cabinet with glass observation window.

For added safety, the interior sample mounting rack can be adjusted by the operator from the exterior.

A brushing device to meet the standard requirements for preparing pile fabrics prior to testing is available upon request. Packs of burners and specimen holders are also available.



# Flammability Standards Matrix

## INSTRUMENT

STANDARD	45° Automatic Flammability Tester	AutoFlamm Flammability Tester	Vertical Flammability Tester	Upholstery Flammability Test Rig	Horizontal Motor Vehicle Flammability Tester
ASTM D1230	●				
ASTM D5132					●
ASTM D6413			●		
16 CFR parts 1615 & 1616			●		
16 CFR part 1610	●				
BS 5438: 1976 Test 1, 2 and 3		●			
BS AU 1690					●
BS 5438: 1989		●			
BS 5852: 2006				●	
EEE DIN 75200					●
EN 71-2		●			
EN 13772: 2011		●			
EN ISO 6940: 1995		●			
EN ISO 6940: 2004		●			
EN ISO 6941: 1995		●			
EN ISO 6941: 2003		●			
EN 1101: 1996		●			
EN 1102: 2016		●			
EN 1103: 2005		●			
EN 532: 1995		●			
EN ISO 15025: 2002 & 2016		●			
FMVSS 302					●
FTMS 191-5908	●				
GM 9070P					●
ISO 3795					●
JIS D 1201					●
SAE J369					●

Note: Additional accessories or configurations may be required to meet specific standards. Visit [www.sdlatlas.com](http://www.sdlatlas.com) or contact an SDL Atlas office for full solutions to testing standards.

# Providing Confidence

For over 60 years, the SDL Atlas companies have been providing confidence in standard based testing through expertise and global partnering. Our customers can be assured that they are making informed decisions based on accurate test results.

SDL Atlas experts work closely with standards committees and retailers on development of standards. Our engineers develop instruments to meet these standards. Our service team calibrates the instruments to exacting UKAS and internal standards. High quality test materials that are consistent from batch to batch are also produced and distributed by SDL Atlas.

## Test Materials

Test materials are a critical part of many textile tests. SDL Atlas produces and distributes a complete line of test materials. Each batch is thoroughly tested to ensure conformity and consistency from batch to batch.

Test materials selection include:

- Multifiber
- Cork Liners
- Abradants
- Phenolic Yellowing
- Detergents
- Ballasts
- Crocking Fabric

## Calibration & Service

- UKAS calibration
- ISO calibration
- Service support
- Factory trained representatives
- SDL Atlas service technicians



SDL Atlas is a UKAS accredited calibration laboratory No. 0688. With fully trained technicians located in Europe, Asia, and North America, we are prepared to support our customers in maintaining their investments and their confidence in their testing instruments.

Providing confidence in standard based testing through expertise and global partnering



### SDL ATLAS LLC

3934 Airway Drive  
Rock Hill, SC 29732-9200, USA  
Telephone: +1 803 329 2110  
Facsimile: +1 803 329 2133  
Website: [www.sdlatlas.com](http://www.sdlatlas.com)

### SDL ATLAS LTD.

1B, Building B, JuanXiangDa Mansion,  
No. 9 Zhongshan Yuan Road,  
Nanshan, Shenzhen, 518052, China  
Telephone: +86 (755) 2671 1168  
Facsimile: +86 (755) 2671 1337  
Website: [www.sdlatlas.com](http://www.sdlatlas.com)

### SDL ATLAS LTD.

3J, Garment Centre, 576 Castle Peak Road,  
Kowloon, Hong Kong.  
Telephone: (852) 3443 4888  
Facsimile: (852) 3443 4999  
Website: [www.sdlatlas.com](http://www.sdlatlas.com)