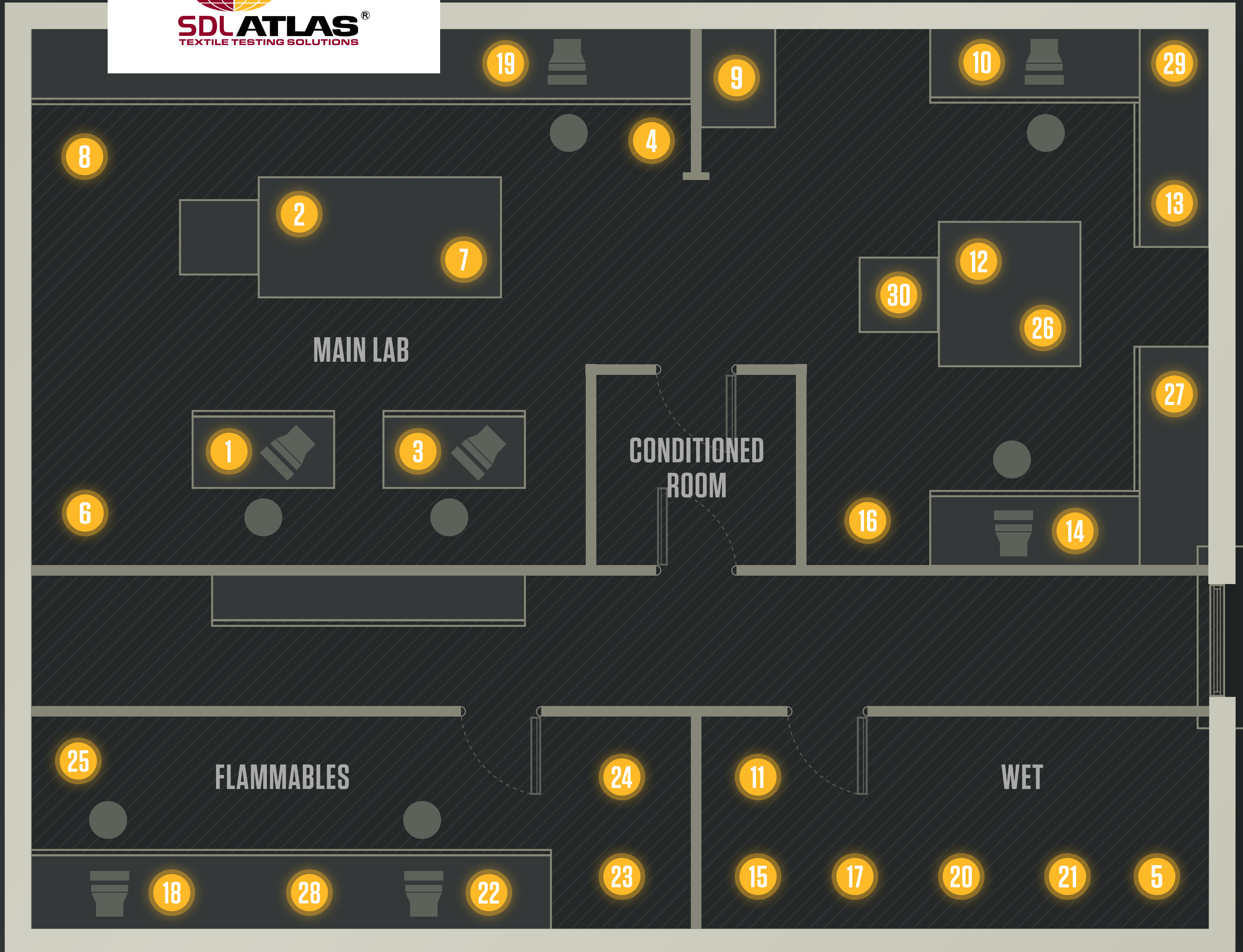


- 1 FTT
- 2 SNAPRITE
- 3 MMT
- 4 SWEATING GUARDED HOT PLATE
- 5 ROTAWASH
- 6 AIRPERM
- 7 ROTAPILL PILLING AND SNAGGING TESTER
- 8 9-HEAD MARTINDALE
- 9 PNUBURST
- 10 UNIVERSAL TENSILE TESTER, 5K ST
- 11 HYDROSTATIC HEAD TESTER
- 12 POWERTEAR
- 13 CROCKMETER AND ELECTRONIC CROCKMETER
- 14 PILLGRADE
- 15 QUICKWASH PLUS
- 16 RANDOM TUMBLE
- 17 LAUNDER-OMETER
- 18 THERMARATE
- 19 AUTOBURST
- 20 BUNDESMANN WATER REPELLENCY TESTER
- 21 RAIN TESTER
- 22 AUTO FLAMM
- 23 VERTICAL FLAMMABILITY CHAMBER
- 24 AFC 45° AUTOMATIC FLAMMABILITY TESTER
- 25 SCORCH TESTER
- 26 UWT, UNIVERSAL WEAR TESTER
- 27 OZONE EXPOSURE CHAMBER
- 28 GAS FUME CHAMBER
- 29 COLORCHEX COLOR ASSESSMENT CABINET
- 30 CONSUMABLES



- 1 FTT
- 2 SNAPRITE
- 3 MMT
- 4 SWEATING GUARDED HOT PLATE
- 5 ROTAWASH
- 6 AIRPERM
- 7 ROTAPILL PILLING AND SNAGGING TESTER
- 8 9-HEAD MARTINDALE
- 9 PNUBURST
- 10 UNIVERSAL TENSILE TESTER, 5K ST
- 11 HYDROSTATIC HEAD TESTER
- 12 POWERTEAR
- 13 CROCKMETER AND ELECTRONIC CROCKMETER
- 14 PILLGRADE
- 15 QUICKWASH PLUS
- 16 RANDOM TUMBLE
- 17 LAUNDER-OMETER
- 18 THERMARATE
- 19 AUTOBURST
- 20 BUNDESMANN WATER REPELLENCY TESTER
- 21 RAIN TESTER
- 22 AUTO FLAMM
- 23 VERTICAL FLAMMABILITY CHAMBER
- 24 AFC 45° AUTOMATIC FLAMMABILITY TESTER
- 25 SCORCH TESTER
- 26 UWT, UNIVERSAL WEAR TESTER
- 27 OZONE EXPOSURE CHAMBER
- 28 GAS FUME CHAMBER
- 29 COLORCHEX COLOR ASSESSMENT CABINET
- 30 CONSUMABLES

1



[VIEW DETAILS](#)

FTT M293

The innovative FTT measures skin touch properties of textiles objectively and quantitatively. The comprehensive, sophisticated design of the FTT enables it to measure all the mechanical and surface properties of fabric in one simple test.

Previously only possible on the very expensive and technically complicated Kawabata instruments, the FTT now makes hand measurement possible for everyone.

DIMENSIONS	510 MM X 598 MM X 840 MM
WEIGHT	85 KG

- 1 FTT
- 2 **SNAPRITE**
- 3 MMT
- 4 SWEATING GUARDED HOT PLATE
- 5 ROTAWASH
- 6 AIRPERM
- 7 ROTAPILL PILLING AND SNAGGING TESTER
- 8 9-HEAD MARTINDALE
- 9 PNUBURST
- 10 UNIVERSAL TENSILE TESTER, 5K ST
- 11 HYDROSTATIC HEAD TESTER
- 12 POWERTEAR
- 13 CROCKMETER AND ELECTRONIC CROCKMETER
- 14 PILLGRADE
- 15 QUICKWASH PLUS
- 16 RANDOM TUMBLE
- 17 LAUNDER-OMETER
- 18 THERMARATE
- 19 AUTOBURST
- 20 BUNDESMANN WATER REPELLENCY TESTER
- 21 RAIN TESTER
- 22 AUTO FLAMM
- 23 VERTICAL FLAMMABILITY CHAMBER
- 24 AFC 45° AUTOMATIC FLAMMABILITY TESTER
- 25 SCORCH TESTER
- 26 UWT, UNIVERSAL WEAR TESTER
- 27 OZONE EXPOSURE CHAMBER
- 28 GAS FUME CHAMBER
- 29 COLORCHEX COLOR ASSESSMENT CABINET
- 30 CONSUMABLES

2



[VIEW DETAILS](#)

SnapRite

G201AA

Motorized instrument for determining the holding or breaking strength of snap fasteners onto garments. The motorized device eliminates operator variability such as application of the load, consistent holding force at the top end, precision hold times, and provides more accurate measurements via a load cell and digital display.

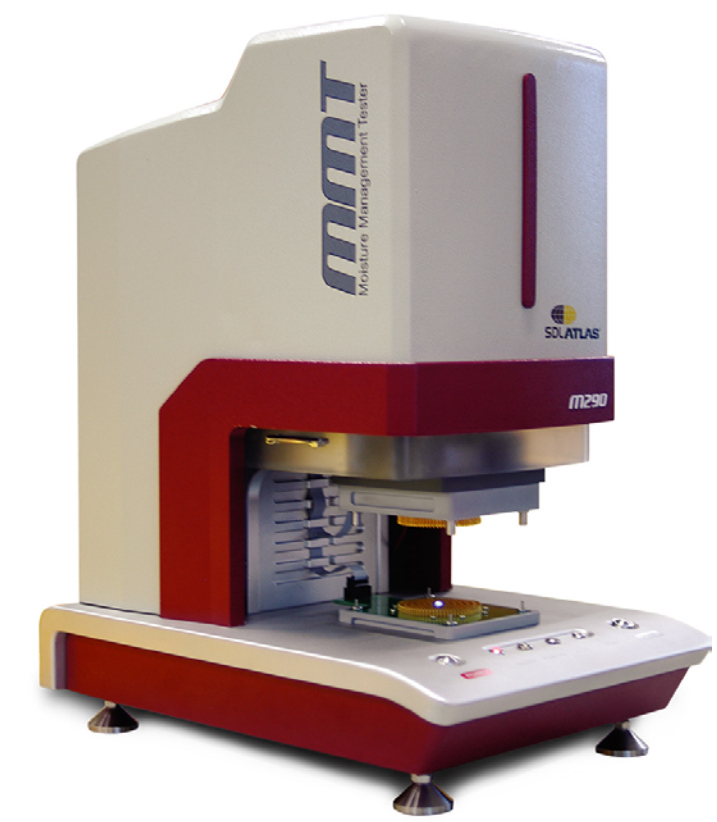
The force range up to 50 kgf (100 lbf, 500 N) with travel distance at 100 mm (4"). Selective hold loads with 15 lb, 17 lb, 20 lb, and 90 N by dead weight system and up to 99 sec hold time for testing.

DIMENSIONS 410 MM X 450 MM X 780 MM

WEIGHT 40 KG

- 1 FTT
- 2 SNAPRITE
- 3 MMT
- 4 SWEATING GUARDED HOT PLATE
- 5 ROTAWASH
- 6 AIRPERM
- 7 ROTAPILL PILLING AND SNAGGING TESTER
- 8 9-HEAD MARTINDALE
- 9 PNUBURST
- 10 UNIVERSAL TENSILE TESTER, 5K ST
- 11 HYDROSTATIC HEAD TESTER
- 12 POWERTEAR
- 13 CROCKMETER AND ELECTRONIC CROCKMETER
- 14 PILLGRADE
- 15 QUICKWASH PLUS
- 16 RANDOM TUMBLE
- 17 LAUNDER-OMETER
- 18 THERMARATE
- 19 AUTOBURST
- 20 BUNDESMANN WATER REPELLENCY TESTER
- 21 RAIN TESTER
- 22 AUTO FLAMM
- 23 VERTICAL FLAMMABILITY CHAMBER
- 24 AFC 45° AUTOMATIC FLAMMABILITY TESTER
- 25 SCORCH TESTER
- 26 UWT, UNIVERSAL WEAR TESTER
- 27 OZONE EXPOSURE CHAMBER
- 28 GAS FUME CHAMBER
- 29 COLORCHEX COLOR ASSESSMENT CABINET
- 30 CONSUMABLES

3



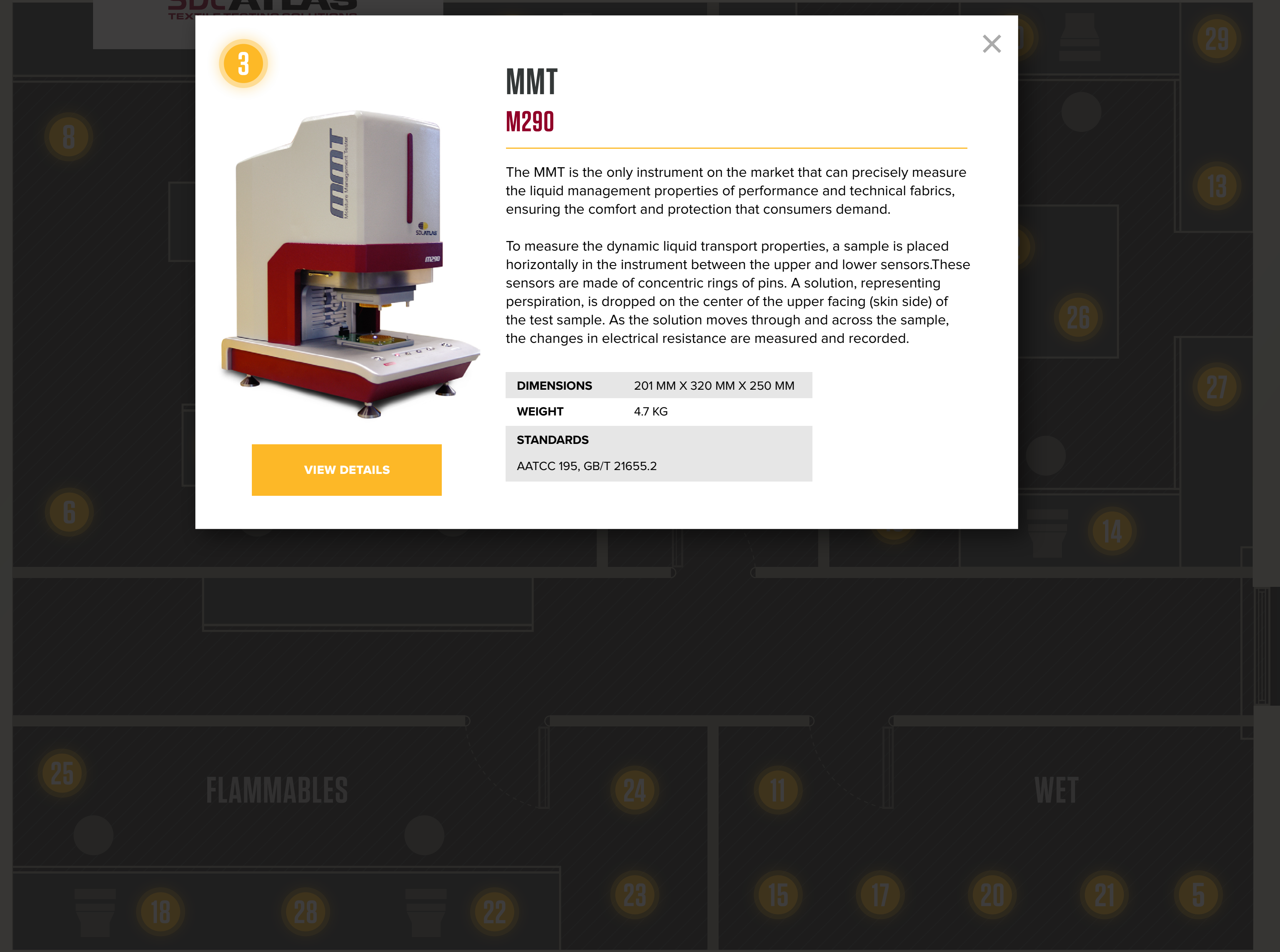
[VIEW DETAILS](#)

MMT M290

The MMT is the only instrument on the market that can precisely measure the liquid management properties of performance and technical fabrics, ensuring the comfort and protection that consumers demand.

To measure the dynamic liquid transport properties, a sample is placed horizontally in the instrument between the upper and lower sensors. These sensors are made of concentric rings of pins. A solution, representing perspiration, is dropped on the center of the upper facing (skin side) of the test sample. As the solution moves through and across the sample, the changes in electrical resistance are measured and recorded.

DIMENSIONS	201 MM X 320 MM X 250 MM
WEIGHT	4.7 KG
STANDARDS	AATCC 195, GB/T 21655.2



FLAMMABLES

WET

- 1 FTT
- 2 SNAPRITE
- 3 MMT
- 4 SWEATING GUARDED HOT PLATE
- 5 ROTAWASH
- 6 AIRPERM
- 7 ROTAPILL PILLING AND SNAGGING TESTER
- 8 9-HEAD MARTINDALE
- 9 PNUBURST
- 10 UNIVERSAL TENSILE TESTER, 5K ST
- 11 HYDROSTATIC HEAD TESTER
- 12 POWERTEAR
- 13 CROCKMETER AND ELECTRONIC CROCKMETER
- 14 PILLGRADE
- 15 QUICKWASH PLUS
- 16 RANDOM TUMBLE
- 17 LAUNDER-OMETER
- 18 THERMARATE
- 19 AUTOBURST
- 20 BUNDESMANN WATER REPELLENCY TESTER
- 21 RAIN TESTER
- 22 AUTO FLAMM
- 23 VERTICAL FLAMMABILITY CHAMBER
- 24 AFC 45° AUTOMATIC FLAMMABILITY TESTER
- 25 SCORCH TESTER
- 26 UWT, UNIVERSAL WEAR TESTER
- 27 OZONE EXPOSURE CHAMBER
- 28 GAS FUME CHAMBER
- 29 COLORCHEX COLOR ASSESSMENT CABINET
- 30 CONSUMABLES

4

Sweating Guarded Hot Plate

M259B



[VIEW DETAILS](#)

Often referred to as the “Skin Model”, the Sweating Guarded Hotplate (SGHP) measures thermal properties and water vapor resistance of fabrics and other materials under steady state conditions. The test simulates the heat and mass transfer process which occurs next to human skin. The SGHP is a complete unit that has the hotplate and controls integrated into a chamber that is maintained at precise temperature, humidity, and airflow conditions. Being a purpose built instrument from the chamber to the hotplate to the controls, there is no integration issues that can come with using hotplates and chambers from different manufacturers. The hotplate itself is another key feature of the SDL Atlas instrument. It is a sintered (porous) bronze plate that gives the best simulation of human skin versus other plates that have a distinct pattern of drilled holes.

DIMENSIONS 1260 MM X 950 MM X 1800 MM

WEIGHT 500 KG

STANDARDS

ASTM D1518, ASTM D1518-11A OPTION 2,
ASTM F1868, EN 343, ISO 11092, GB/T 11048

- 1 FTT
- 2 SNAPRITE
- 3 MMT
- 4 SWEATING GUARDED HOT PLATE
- 5 ROTAWASH
- 6 AIRPERM
- 7 ROTAPILL PILLING AND SNAGGING TESTER
- 8 9-HEAD MARTINDALE
- 9 PNUBURST
- 10 UNIVERSAL TENSILE TESTER, 5K ST
- 11 HYDROSTATIC HEAD TESTER
- 12 POWERTEAR
- 13 CROCKMETER AND ELECTRONIC CROCKMETER
- 14 PILLGRADE
- 15 QUICKWASH PLUS
- 16 RANDOM TUMBLE
- 17 LAUNDER-OMETER
- 18 THERMARATE
- 19 AUTOBURST
- 20 BUNDESMANN WATER REPELLENCY TESTER
- 21 RAIN TESTER
- 22 AUTO FLAMM
- 23 VERTICAL FLAMMABILITY CHAMBER
- 24 AFC 45° AUTOMATIC FLAMMABILITY TESTER
- 25 SCORCH TESTER
- 26 UWT, UNIVERSAL WEAR TESTER
- 27 OZONE EXPOSURE CHAMBER
- 28 GAS FUME CHAMBER
- 29 COLORCHEX COLOR ASSESSMENT CABINET
- 30 CONSUMABLES

5



VIEW DETAILS

Rotawash M228

Colorfastness to washing is easy and affordable with the Rotawash. Available in an 8 or 12 washpot model, this instrument can handle either the 550 ml or 1200 ml washpots. Washpots just press into place.

The instrument is all stainless steel to provide years of reliable service in a wet environment. The touchscreen controller is preloaded with the most popular tests and provides information on when the test will be completed.

DIMENSIONS 760 MM X 650 MM X 1100 MM

WEIGHT 120 KG

STANDARDS

AATCC 61, AATCC 86, AATCC 132, AATCC 190, GB/T 3921, GB/T 5711, GB/T 12490, ISO 105-C01, ISO 105-C02, ISO 105-C03, ISO 105-C04, ISO 105-C05, ISO 105-C06, ISO 105-C08, ISO 105-C09, ISO 105-C10, ISO 105-D01, ISO 105-E03, ISO 105-E12, WOOLMARK TM7, WOOLMARKTM115, WOOLMARKTM177, WOOLMARKTM193, WOOLMARKTM199, WOOLMARKTM240, WOOLMARKTM241, FTM S 191 METHOD 5614, FTM S 191 METHOD 5622, M&S C4A, M&S C5, M&S C10A, M&S C11, M&S C26, M&S C37, M&S C49A, M&S P3B, M&S P12A, M&S P137, NEXT 2, NEXT 2A, NEXT 3, NEXT 3A, NEXT 5, JIS L 0850, JIS L 0879

- 1 FTT
- 2 SNAPRITE
- 3 MMT
- 4 SWEATING GUARDED HOT PLATE
- 5 ROTAWASH
- 6 AIRPERM
- 7 ROTAPILL PILLING AND SNAGGING TESTER
- 8 9-HEAD MARTINDALE
- 9 PNUBURST
- 10 UNIVERSAL TENSILE TESTER, 5K ST
- 11 HYDROSTATIC HEAD TESTER
- 12 POWERTEAR
- 13 CROCKMETER AND ELECTRONIC CROCKMETER
- 14 PILLGRADE
- 15 QUICKWASH PLUS
- 16 RANDOM TUMBLE
- 17 LAUNDER-OMETER
- 18 THERMARATE
- 19 AUTOBURST
- 20 BUNDESMANN WATER REPELLENCY TESTER
- 21 RAIN TESTER
- 22 AUTO FLAMM
- 23 VERTICAL FLAMMABILITY CHAMBER
- 24 AFC 45° AUTOMATIC FLAMMABILITY TESTER
- 25 SCORCH TESTER
- 26 UWT, UNIVERSAL WEAR TESTER
- 27 OZONE EXPOSURE CHAMBER
- 28 GAS FUME CHAMBER
- 29 COLORCHEX COLOR ASSESSMENT CABINET
- 30 CONSUMABLES

6



VIEW DETAILS

AirPerm

M021

The AirPerm makes air permeability testing much more affordable while maintaining confidence that test results meet international and retailer standards. Designed to meet air permeability standards for paper, textiles, and non-wovens, the AirPerm provides quick, straight forward results in the unit of measure of your choice.

DIMENSIONS	900 MM X 590 MM X 100 MM
WEIGHT	80 KG
STANDARDS	
ADIDAS TM 6.08, ASTM D737, BS 5636, DIN 53887, EDANA 140.1, EDANA 140.2, GB/T 5453, ISO 9237, JIS L 1096-A, TAPPI T251, WSP 70.1	

FLAMMABLES

WET

- 1 FTT
- 2 SNAPRITE
- 3 MMT
- 4 SWEATING GUARDED HOT PLATE
- 5 ROTAWASH
- 6 AIRPERM
- 7 ROTAPILL PILLING AND SNAGGING TESTER
- 8 9-HEAD MARTINDALE
- 9 PNUBURST
- 10 UNIVERSAL TENSILE TESTER, 5K ST
- 11 HYDROSTATIC HEAD TESTER
- 12 POWERTEAR
- 13 CROCKMETER AND ELECTRONIC CROCKMETER
- 14 PILLGRADE
- 15 QUICKWASH PLUS
- 16 RANDOM TUMBLE
- 17 LAUNDER-OMETER
- 18 THERMARATE
- 19 AUTOBURST
- 20 BUNDESMANN WATER REPELLENCY TESTER
- 21 RAIN TESTER
- 22 AUTO FLAMM
- 23 VERTICAL FLAMMABILITY CHAMBER
- 24 AFC 45° AUTOMATIC FLAMMABILITY TESTER
- 25 SCORCH TESTER
- 26 UWT, UNIVERSAL WEAR TESTER
- 27 OZONE EXPOSURE CHAMBER
- 28 GAS FUME CHAMBER
- 29 COLORCHEX COLOR ASSESSMENT CABINET
- 30 CONSUMABLES

7



VIEW DETAILS

RotaPill Pilling and Snagging Tester

M227

The RotaPill Pilling and Snagging Tester offers numerous options for testing fabrics. From the standard ICI Pilling and Snagging Box to M&S drums to the Octagonal Snagging Drum, the RotaPill will make your testing reliable and easy.

The color touchscreen controller has all the standard tests preloaded so tests can be started with just a couple of touches. Magnetic backed cork liners make cork changes easy without the need to remove the box from the drive.

DIMENSIONS 820 MM X 480 MM X 490 MM

WEIGHT 85 KG

STANDARDS

ASTM D3512, ISO 12945-3, GB/T 4802.4, JIS L 1076-D, NF G07-132, DIN 53867

- 1 FTT
- 2 SNAPRITE
- 3 MMT
- 4 SWEATING GUARDED HOT PLATE
- 5 ROTAWASH
- 6 AIRPERM
- 7 ROTAPILL PILLING AND SNAGGING TESTER
- 8 9-HEAD MARTINDALE
- 9 PNUBURST
- 10 UNIVERSAL TENSILE TESTER, 5K ST
- 11 HYDROSTATIC HEAD TESTER
- 12 POWERTEAR
- 13 CROCKMETER AND ELECTRONIC CROCKMETER
- 14 PILLGRADE
- 15 QUICKWASH PLUS
- 16 RANDOM TUMBLE
- 17 LAUNDER-OMETER
- 18 THERMARATE
- 19 AUTOBURST
- 20 BUNDESMANN WATER REPELLENCY TESTER
- 21 RAIN TESTER
- 22 AUTO FLAMM
- 23 VERTICAL FLAMMABILITY CHAMBER
- 24 AFC 45° AUTOMATIC FLAMMABILITY TESTER
- 25 SCORCH TESTER
- 26 UWT, UNIVERSAL WEAR TESTER
- 27 OZONE EXPOSURE CHAMBER
- 28 GAS FUME CHAMBER
- 29 COLORCHEX COLOR ASSESSMENT CABINET
- 30 CONSUMABLES

8

9-Head Martindale

M235



VIEW DETAILS

The Martindale is a versatile instrument capable of multiple abrasion and pilling tests. It uses precision components to deliver the exact abrasion or pilling movement required by all international and retailer standards.

The touch screen controller, with the most common functions accessible in one or two touches, makes this the easiest Martindale in the market to use. Our 9-position instrument is designed to conserve valuable bench space while providing maximum testing capacity.

DIMENSIONS	740 MM X 600 MM X 350 MM
WEIGHT	120 KG

STANDARDS

ARCADIA AG 32, 34, 35, ASTM D4966, BS 2543, BS 3424, BS 5690, EN 13770, EN 14325, EN 14465, EN 14605, EN 15973, EN 16094, EN 388, EN 343, EN530, EN 943, GB/T 13775, GB/T 21196, IS 12673, ISO12947, ISO 17704, ISO 17076-2, ISO 20344, ISO 26082-1, ISO 5470-2, IUP 48-2, IUP53-1, IWTO40, JIS L1096, M&SP19, M&S P140, NEXT 18, PV 3975, SABS 1009, SFS 4328, SN 198529, VDA 230-21, VDA 230-212, WOOLMARK 112, ARCADIA AG 26, ASTM D4970, GB/T 4802.2, ISO 12945-2, M&S P17, 18C, NEXT 26, SN 198525, WOOLMARK 196, WSP 020.5.R3 (12)

- 1 FTT
- 2 SNAPRITE
- 3 MMT
- 4 SWEATING GUARDED HOT PLATE
- 5 ROTAWASH
- 6 AIRPERM
- 7 ROTAPILL PILLING AND SNAGGING TESTER
- 8 9-HEAD MARTINDALE
- 9 PNUBURST
- 10 UNIVERSAL TENSILE TESTER, 5K ST
- 11 HYDROSTATIC HEAD TESTER
- 12 POWERTEAR
- 13 CROCKMETER AND ELECTRONIC CROCKMETER
- 14 PILLGRADE
- 15 QUICKWASH PLUS
- 16 RANDOM TUMBLE
- 17 LAUNDER-OMETER
- 18 THERMARATE
- 19 AUTOBURST
- 20 BUNDESMANN WATER REPELLENCY TESTER
- 21 RAIN TESTER
- 22 AUTO FLAMM
- 23 VERTICAL FLAMMABILITY CHAMBER
- 24 AFC 45° AUTOMATIC FLAMMABILITY TESTER
- 25 SCORCH TESTER
- 26 UWT, UNIVERSAL WEAR TESTER
- 27 OZONE EXPOSURE CHAMBER
- 28 GAS FUME CHAMBER
- 29 COLORCHEX COLOR ASSESSMENT CABINET
- 30 CONSUMABLES

9



[VIEW DETAILS](#)

PnuBurst M229P

The PnuBurst provides unparalleled capabilities in a pneumatic bursting tester. Automatic flow control ensures bursts are achieved within the proper time according to standards. The instrument also provides diaphragm correction calculations to give accurate bursting pressures. A laser measurement system is used for distension height. The color touch screen controller provides full test controls including clamping pressure and Marks & Spencer controls. Included software captures all of the data from standard burst tests for analysis. An optional software allows users to program special sequences such as cyclic testing or stretch and hold testing. Stretch and hold can be set to hold a given distension or a given pressure. With a maximum capacity of 1500 kPa (200 psi), the PnuBurst is the most powerful pneumatic burst tester on the market.

DIMENSIONS 780 MM X 480 MM X 910 MM

WEIGHT 140 KG

STANDARDS

ADIDAS 4.09, ASTM D3786, EDANA 80.4, GB/T 7742.2, ISO 13938-2, ISO 2758, M&S P27, NEXT 22, WOOLMARKTM29

- 1 FTT
- 2 SNAPRITE
- 3 MMT
- 4 SWEATING GUARDED HOT PLATE
- 5 ROTAWASH
- 6 AIRPERM
- 7 ROTAPILL PILLING AND SNAGGING TESTER
- 8 9-HEAD MARTINDALE
- 9 PNUBURST
- 10 UNIVERSAL TENSILE TESTER, 5K ST
- 11 HYDROSTATIC HEAD TESTER
- 12 POWERTEAR
- 13 CROCKMETER AND ELECTRONIC CROCKMETER
- 14 PILLGRADE
- 15 QUICKWASH PLUS
- 16 RANDOM TUMBLE
- 17 LAUNDER-OMETER
- 18 THERMARATE
- 19 AUTOBURST
- 20 BUNDESMANN WATER REPELLENCY TESTER
- 21 RAIN TESTER
- 22 AUTO FLAMM
- 23 VERTICAL FLAMMABILITY CHAMBER
- 24 AFC 45° AUTOMATIC FLAMMABILITY TESTER
- 25 SCORCH TESTER
- 26 UWT, UNIVERSAL WEAR TESTER
- 27 OZONE EXPOSURE CHAMBER
- 28 GAS FUME CHAMBER
- 29 COLORCHEX COLOR ASSESSMENT CABINET
- 30 CONSUMABLES

10



VIEW DETAILS

Universal Tensile Tester, 5K ST

H5KST

The ST series of electromechanical testing machines from Tinius Olsen are designed to test a wide range of materials, including plastics, film, paper, packaging materials, filter material, adhesives, foils, food, toys, medical devices and components, in tension, compression, flexure shear, and peel. All ST machines can be used with a selection of hand held interfaces or a virtual machine interface running on a connected PC. Powerful data analysis and machine control software (the Horizon Materials Testing software) can be added to your system to provide a library of standardized test routines, generate a complete graphical result of your test, and to perform sophisticated powerful analyses on the test data to produce the test report you need. A comprehensive selection of self identifying load cells, grips and fixtures to hold the simplest to most complex specimen profile, strain measurement instruments that employ several different technologies, temperature chambers, and more can be used in conjunction with these test frames and Horizon software system to ensure one of the best, most accurate, most repeatable and easy-to-use systems on the market today.

DIMENSIONS	1140 MM X 490 MM X 450 MM
WEIGHT	50 KG

- 1 FTT
- 2 SNAPRITE
- 3 MMT
- 4 SWEATING GUARDED HOT PLATE
- 5 ROTAWASH
- 6 AIRPERM
- 7 ROTAPILL PILLING AND SNAGGING TESTER
- 8 9-HEAD MARTINDALE
- 9 PNUBURST
- 10 UNIVERSAL TENSILE TESTER, 5K ST
- 11 HYDROSTATIC HEAD TESTER
- 12 POWERTEAR
- 13 CROCKMETER AND ELECTRONIC CROCKMETER
- 14 PILLGRADE
- 15 QUICKWASH PLUS
- 16 RANDOM TUMBLE
- 17 LAUNDER-OMETER
- 18 THERMARATE
- 19 AUTOBURST
- 20 BUNDESMANN WATER REPELLENCY TESTER
- 21 RAIN TESTER
- 22 AUTO FLAMM
- 23 VERTICAL FLAMMABILITY CHAMBER
- 24 AFC 45° AUTOMATIC FLAMMABILITY TESTER
- 25 SCORCH TESTER
- 26 UWT, UNIVERSAL WEAR TESTER
- 27 OZONE EXPOSURE CHAMBER
- 28 GAS FUME CHAMBER
- 29 COLORCHEX COLOR ASSESSMENT CABINET
- 30 CONSUMABLES

11



[VIEW DETAILS](#)

Hydrostatic Head Tester

M018

Powerful and intelligent, the Hydrostatic Head Tester is designed to help labs be more efficient while meeting global standards. The compact design can reach 3 bar of pressure using standard lab compressed air. The quick-test function allows users to perform other tasks during the first 80% of the standard test. An alarm indicates fail pressure is close and a technician should begin observing. The test area is well lit behind a clear shield for observing when droplets appear.

DIMENSIONS 480 MM X 540 MM X 600 MM

WEIGHT 70 KG

STANDARDS

AATCC 127, BS 3321, ERT 120-1, AFNOR G07-057, BS EN 20811, ERT 160-0, JIS1092 A, ASTM D751, EN 343, IST 080.4 (01), IST 080.6 (01), WSP 080.6.R4 (12)

- 1 FTT
- 2 SNAPRITE
- 3 MMT
- 4 SWEATING GUARDED HOT PLATE
- 5 ROTAWASH
- 6 AIRPERM
- 7 ROTAPILL PILLING AND SNAGGING TESTER
- 8 9-HEAD MARTINDALE
- 9 PNUBURST
- 10 UNIVERSAL TENSILE TESTER, 5K ST
- 11 HYDROSTATIC HEAD TESTER
- 12 **POWERTEAR**
- 13 CROCKMETER AND ELECTRONIC CROCKMETER
- 14 PILLGRADE
- 15 QUICKWASH PLUS
- 16 RANDOM TUMBLE
- 17 LAUNDER-OMETER
- 18 THERMARATE
- 19 AUTOBURST
- 20 BUNDESMANN WATER REPELLENCY TESTER
- 21 RAIN TESTER
- 22 AUTO FLAMM
- 23 VERTICAL FLAMMABILITY CHAMBER
- 24 AFC 45° AUTOMATIC FLAMMABILITY TESTER
- 25 SCORCH TESTER
- 26 UWT, UNIVERSAL WEAR TESTER
- 27 OZONE EXPOSURE CHAMBER
- 28 GAS FUME CHAMBER
- 29 COLORCHEX COLOR ASSESSMENT CABINET
- 30 CONSUMABLES

12



[VIEW DETAILS](#)

PowerTear MO08HE

The PowerTear is the most versatile Elmendorf tearing tester of its kind available. It is designed to provide accurate results while being easy to use. Paper, cardboard, plastic, textiles, and nonwovens are all materials that can be tested using the PowerTear. Electronic braking and two button release make the instrument safe while a rotary encoder, pendulum balance control, and a bearing on the release pin make it accurate and reliable. Lever clamps make sample loading faster and easier for the operator. The versatility of the PowerTear allows for a wide range of capability for testing both light and heavy weight materials.

DIMENSIONS 460 MM X 620 MM X 460 MM

WEIGHT 80 KG

STANDARDS

ASTM D 5734, WSP 100.1, APPIA P 400, ASTM D 689, BS 4468, CSA D9, DIN 53128, EN 21974, GB/T 455 ISO 1974, JIS P 8116, PAPTAC D9, SCAN P11, SNV 198482, TAPPI T414, UNI 6444, ASTM D1922, GB/T11999, ISO 6383-2, JIS K7128-2, NF T54 141

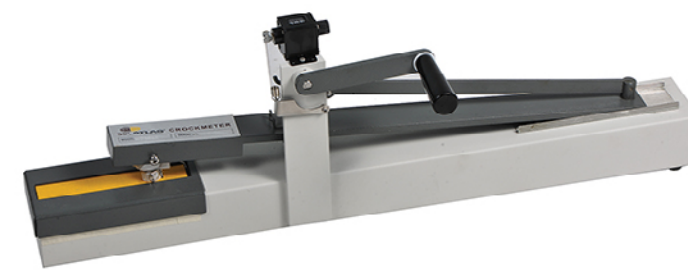
FLAMMABLES

WET

- 1 FTT
- 2 SNAPRITE
- 3 MMT
- 4 SWEATING GUARDED HOT PLATE
- 5 ROTAWASH
- 6 AIRPERM
- 7 ROTAPILL PILLING AND SNAGGING TESTER
- 8 9-HEAD MARTINDALE
- 9 PNUBURST
- 10 UNIVERSAL TENSILE TESTER, 5K ST
- 11 HYDROSTATIC HEAD TESTER
- 12 POWERTEAR
- 13 CROCKMETER AND ELECTRONIC CROCKMETER
- 14 PILLGRADE
- 15 QUICKWASH PLUS
- 16 RANDOM TUMBLE
- 17 LAUNDER-OMETER
- 18 THERMARATE
- 19 AUTOBURST
- 20 BUNDESMANN WATER REPELLENCY TESTER
- 21 RAIN TESTER
- 22 AUTO FLAMM
- 23 VERTICAL FLAMMABILITY CHAMBER
- 24 AFC 45° AUTOMATIC FLAMMABILITY TESTER
- 25 SCORCH TESTER
- 26 UWT, UNIVERSAL WEAR TESTER
- 27 OZONE EXPOSURE CHAMBER
- 28 GAS FUME CHAMBER
- 29 COLORCHEX COLOR ASSESSMENT CABINET
- 30 CONSUMABLES

13

Crockmeter and Electronic Crockmeter M238AA



To determine colorfastness of textile to dry or wet rubbing, fitted with hand crank/counter. Provided with a steel specimen holder and 16 mm diameter test finger.

Also available in a motorized model for frequent use and long run tests, fitted with digital electronic pre-settable counter for strokes up to 1000.

DIMENSIONS 225 MM X 600 MM X 270 MM

WEIGHT 9.5 KG

STANDARDS

AATCC 8/165, ISO 105 D02/ X12,
M&S C8/C8A/ C25/C52, GB/T 3920/ 5712,
NEXT 6/10 ASTM D6279 GB/T 3920/ 5712 NEXT 6/10

VIEW DETAILS

FLAMMABLES

WET

- 1 FTT
- 2 SNAPRITE
- 3 MMT
- 4 SWEATING GUARDED HOT PLATE
- 5 ROTAWASH
- 6 AIRPERM
- 7 ROTAPILL PILLING AND SNAGGING TESTER
- 8 9-HEAD MARTINDALE
- 9 PNUBURST
- 10 UNIVERSAL TENSILE TESTER, 5K ST
- 11 HYDROSTATIC HEAD TESTER
- 12 POWERTEAR
- 13 CROCKMETER AND ELECTRONIC CROCKMETER
- 14 PILLGRADE
- 15 QUICKWASH PLUS
- 16 RANDOM TUMBLE
- 17 LAUNDER-OMETER
- 18 THERMARATE
- 19 AUTOBURST
- 20 BUNDESMANN WATER REPELLENCY TESTER
- 21 RAIN TESTER
- 22 AUTO FLAMM
- 23 VERTICAL FLAMMABILITY CHAMBER
- 24 AFC 45° AUTOMATIC FLAMMABILITY TESTER
- 25 SCORCH TESTER
- 26 UWT, UNIVERSAL WEAR TESTER
- 27 OZONE EXPOSURE CHAMBER
- 28 GAS FUME CHAMBER
- 29 COLORCHEX COLOR ASSESSMENT CABINET
- 30 CONSUMABLES

14



VIEW DETAILS

PillGrade

M227G

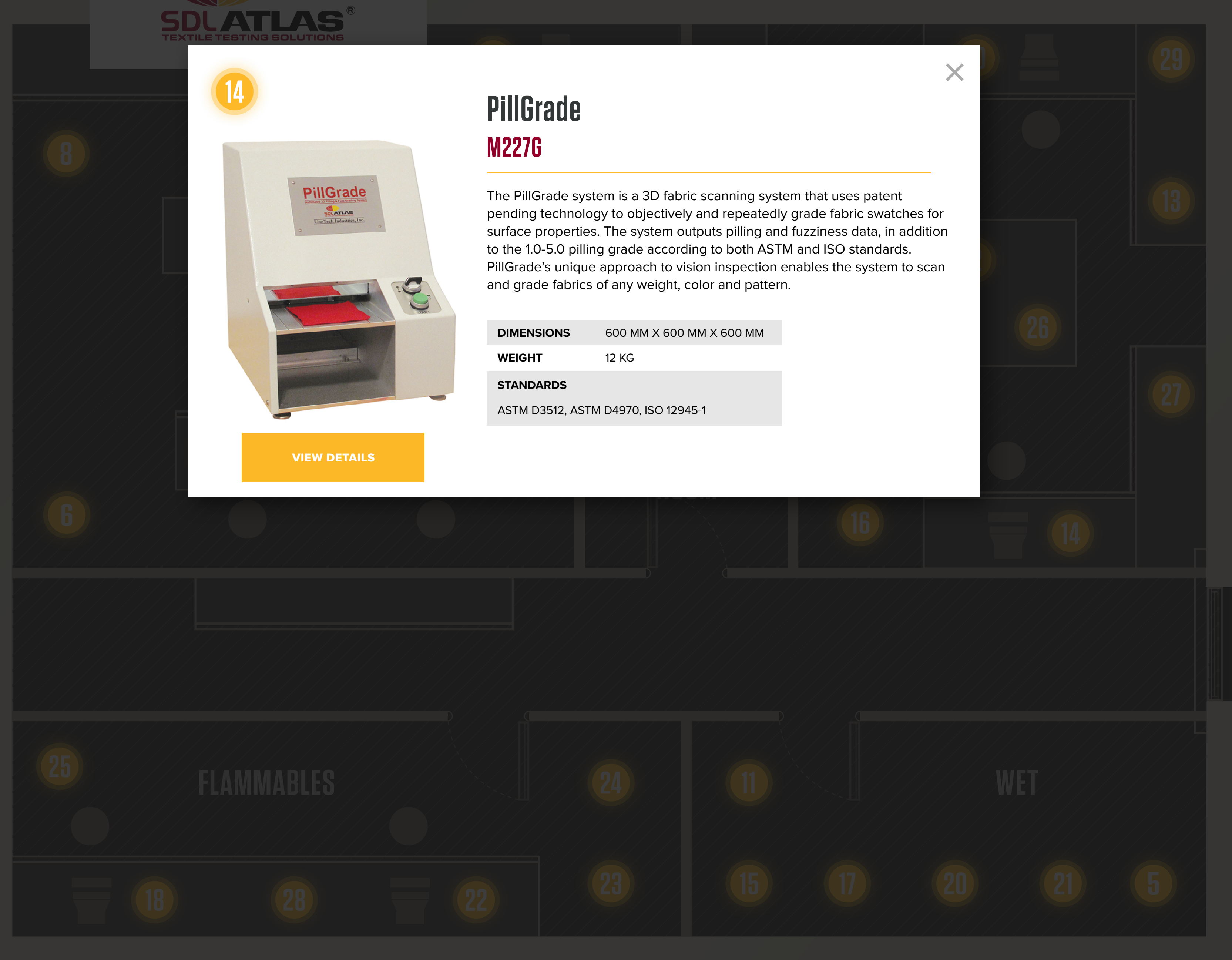
The PillGrade system is a 3D fabric scanning system that uses patent pending technology to objectively and repeatedly grade fabric swatches for surface properties. The system outputs pilling and fuzziness data, in addition to the 1.0-5.0 pilling grade according to both ASTM and ISO standards. PillGrade's unique approach to vision inspection enables the system to scan and grade fabrics of any weight, color and pattern.

DIMENSIONS 600 MM X 600 MM X 600 MM

WEIGHT 12 KG

STANDARDS

ASTM D3512, ASTM D4970, ISO 12945-1



- 1 FTT
- 2 SNAPRITE
- 3 MMT
- 4 SWEATING GUARDED HOT PLATE
- 5 ROTAWASH
- 6 AIRPERM
- 7 ROTAPILL PILLING AND SNAGGING TESTER
- 8 9-HEAD MARTINDALE
- 9 PNUBURST
- 10 UNIVERSAL TENSILE TESTER, 5K ST
- 11 HYDROSTATIC HEAD TESTER
- 12 POWERTEAR
- 13 CROCKMETER AND ELECTRONIC CROCKMETER
- 14 PILLGRADE
- 15 QUICKWASH PLUS
- 16 RANDOM TUMBLE
- 17 LAUNDER-OMETER
- 18 THERMARATE
- 19 AUTOBURST
- 20 BUNDESMANN WATER REPELLENCY TESTER
- 21 RAIN TESTER
- 22 AUTO FLAMM
- 23 VERTICAL FLAMMABILITY CHAMBER
- 24 AFC 45° AUTOMATIC FLAMMABILITY TESTER
- 25 SCORCH TESTER
- 26 UWT, UNIVERSAL WEAR TESTER
- 27 OZONE EXPOSURE CHAMBER
- 28 GAS FUME CHAMBER
- 29 COLORCHEX COLOR ASSESSMENT CABINET
- 30 CONSUMABLES

15



VIEW DETAILS

QuickWash Plus

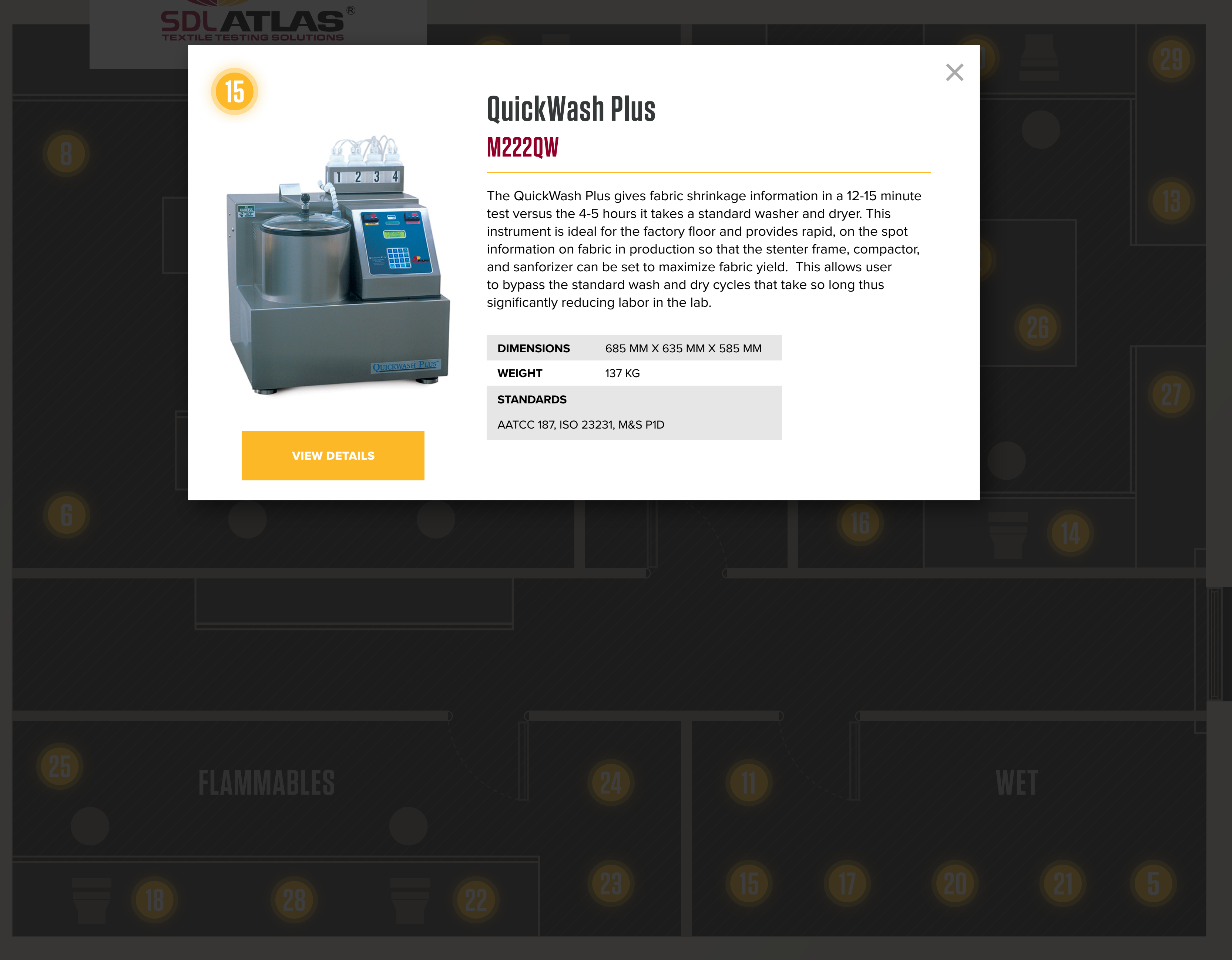
M222QW

The QuickWash Plus gives fabric shrinkage information in a 12-15 minute test versus the 4-5 hours it takes a standard washer and dryer. This instrument is ideal for the factory floor and provides rapid, on the spot information on fabric in production so that the stenter frame, compactor, and sanforizer can be set to maximize fabric yield. This allows user to bypass the standard wash and dry cycles that take so long thus significantly reducing labor in the lab.

DIMENSIONS 685 MM X 635 MM X 585 MM

WEIGHT 137 KG

STANDARDS
AATCC 187, ISO 23231, M&S P1D



- 1 FTT
- 2 SNAPRITE
- 3 MMT
- 4 SWEATING GUARDED HOT PLATE
- 5 ROTAWASH
- 6 AIRPERM
- 7 ROTAPILL PILLING AND SNAGGING TESTER
- 8 9-HEAD MARTINDALE
- 9 PNUBURST
- 10 UNIVERSAL TENSILE TESTER, 5K ST
- 11 HYDROSTATIC HEAD TESTER
- 12 POWERTEAR
- 13 CROCKMETER AND ELECTRONIC CROCKMETER
- 14 PILLGRADE
- 15 QUICKWASH PLUS
- 16 RANDOM TUMBLE**
- 17 LAUNDER-OMETER
- 18 THERMARATE
- 19 AUTOBURST
- 20 BUNDESMANN WATER REPELLENCY TESTER
- 21 RAIN TESTER
- 22 AUTO FLAMM
- 23 VERTICAL FLAMMABILITY CHAMBER
- 24 AFC 45° AUTOMATIC FLAMMABILITY TESTER
- 25 SCORCH TESTER
- 26 UWT, UNIVERSAL WEAR TESTER
- 27 OZONE EXPOSURE CHAMBER
- 28 GAS FUME CHAMBER
- 29 COLORCHEX COLOR ASSESSMENT CABINET
- 30 CONSUMABLES

16



[VIEW DETAILS](#)

Random Tumble M227R/S

The longstanding standard instrument for ASTM D3512, the SDL Atlas Random Tumble Pilling Tester has provided consistency in pilling tests for decades. Along with the critically important cork liner, our instrument and consumables have provided confidence that results achieved today match those from when the ASTM standard was first created.

DIMENSIONS 470 MM X 402 MM X 680 MM

WEIGHT 61 KG

STANDARDS

ASTM D3512, ISO 12945-3, GB/T 4802.4,
JIS L 1076-D, NF G07-132, DIN 53867

- 1 FTT
- 2 SNAPRITE
- 3 MMT
- 4 SWEATING GUARDED HOT PLATE
- 5 ROTAWASH
- 6 AIRPERM
- 7 ROTAPILL PILLING AND SNAGGING TESTER
- 8 9-HEAD MARTINDALE
- 9 PNUBURST
- 10 UNIVERSAL TENSILE TESTER, 5K ST
- 11 HYDROSTATIC HEAD TESTER
- 12 POWERTEAR
- 13 CROCKMETER AND ELECTRONIC CROCKMETER
- 14 PILLGRADE
- 15 QUICKWASH PLUS
- 16 RANDOM TUMBLE
- 17 LAUNDER-OMETER**
- 18 THERMARATE
- 19 AUTOBURST
- 20 BUNDESMANN WATER REPELLENCY TESTER
- 21 RAIN TESTER
- 22 AUTO FLAMM
- 23 VERTICAL FLAMMABILITY CHAMBER
- 24 AFC 45° AUTOMATIC FLAMMABILITY TESTER
- 25 SCORCH TESTER
- 26 UWT, UNIVERSAL WEAR TESTER
- 27 OZONE EXPOSURE CHAMBER
- 28 GAS FUME CHAMBER
- 29 COLORCHEX COLOR ASSESSMENT CABINET
- 30 CONSUMABLES

17



[VIEW DETAILS](#)

Launder-Ometer M228AA

AATCC specified the Launder-Ometer as the only approved color fastness to washing instrument for over 50 years. It has proven its reliability and durability over these many decades. The all stainless steel construction stands up to the hard environment of wet labs. The Launder-Ometer now comes with an easy opening door, quick-lock retention bars for the containers, and a rotor jog function to ease loading and unloading. The addition of a touchscreen controller that is preloaded with the most popular tests makes the instrument even easier to use.

DIMENSIONS 1172 MM X 645 MM X 1175 MM

WEIGHT 135 KG

STANDARDS
 AATCC 61, AATCC 86, AATCC 132, AATCC 190, GB/T 3921, GB/T 5711, GB/T 12490, ISO 105-C01, ISO 105-C02, ISO 105-C03, ISO 105-C04, ISO 105-C05, ISO 105-C06, ISO 105-C08, ISO 105-C09, ISO 105-C10, ISO 105-D01, ISO 105-E03, ISO 105-E12, WOOLMARK TM7, WOOLMARKTM115, WOOLMARKTM177, WOOLMARKTM193, WOOLMARKTM199, WOOLMARKTM240, WOOLMARKTM241, FTM S 191

- 1 FTT
- 2 SNAPRITE
- 3 MMT
- 4 SWEATING GUARDED HOT PLATE
- 5 ROTAWASH
- 6 AIRPERM
- 7 ROTAPILL PILLING AND SNAGGING TESTER
- 8 9-HEAD MARTINDALE
- 9 PNUBURST
- 10 UNIVERSAL TENSILE TESTER, 5K ST
- 11 HYDROSTATIC HEAD TESTER
- 12 POWERTEAR
- 13 CROCKMETER AND ELECTRONIC CROCKMETER
- 14 PILLGRADE
- 15 QUICKWASH PLUS
- 16 RANDOM TUMBLE
- 17 LAUNDER-OMETER
- 18 THERMARATE
- 19 AUTOBURST
- 20 BUNDESMANN WATER REPELLENCY TESTER
- 21 RAIN TESTER
- 22 AUTO FLAMM
- 23 VERTICAL FLAMMABILITY CHAMBER
- 24 AFC 45° AUTOMATIC FLAMMABILITY TESTER
- 25 SCORCH TESTER
- 26 UWT, UNIVERSAL WEAR TESTER
- 27 OZONE EXPOSURE CHAMBER
- 28 GAS FUME CHAMBER
- 29 COLORCHEX COLOR ASSESSMENT CABINET
- 30 CONSUMABLES

18



[VIEW DETAILS](#)

ThermaRate M233D

An innovative test instrument, the ThermaRate measures the burn injury protection of fabric samples. The system is designed to simulate the fabrics being in the proximity of fire or high heat. The ThermaRate gives fabric manufacturers a lower cost, easier method of testing the thermal protective feature of their fabric.

DIMENSIONS 1150 MM X 730 MM X 460 MM

WEIGHT 150 KG

- 1 FTT
- 2 SNAPRITE
- 3 MMT
- 4 SWEATING GUARDED HOT PLATE
- 5 ROTAWASH
- 6 AIRPERM
- 7 ROTAPILL PILLING AND SNAGGING TESTER
- 8 9-HEAD MARTINDALE
- 9 PNUBURST
- 10 UNIVERSAL TENSILE TESTER, 5K ST
- 11 HYDROSTATIC HEAD TESTER
- 12 POWERTEAR
- 13 CROCKMETER AND ELECTRONIC CROCKMETER
- 14 PILLGRADE
- 15 QUICKWASH PLUS
- 16 RANDOM TUMBLE
- 17 LAUNDER-OMETER
- 18 THERMARATE
- 19 AUTOBURST
- 20 BUNDESMANN WATER REPELLENCY TESTER
- 21 RAIN TESTER
- 22 AUTO FLAMM
- 23 VERTICAL FLAMMABILITY CHAMBER
- 24 AFC 45° AUTOMATIC FLAMMABILITY TESTER
- 25 SCORCH TESTER
- 26 UWT, UNIVERSAL WEAR TESTER
- 27 OZONE EXPOSURE CHAMBER
- 28 GAS FUME CHAMBER
- 29 COLORCHEX COLOR ASSESSMENT CABINET
- 30 CONSUMABLES

19



[VIEW DETAILS](#)

Autoburst M229

The Autoburst is a hydraulic bursting tester with advanced testing controls. The instrument has automatic flow control allowing bursts to be achieved within the specified time of the standard. The advanced software provides diaphragm correction calculations for consistent results. These features, along with a maximum capacity of 6000 kPa (871 psi), make the Autoburst the most versatile burst tester on the market.

DIMENSIONS 780 MM X 480 MM X 910 MM

WEIGHT 140 KG

STANDARDS

ASTM D3786, EN 12332-2, ERT 80-4-20, FZ/T 01030, ISO 13938-1, ISO 3303-B, GB/T 7742.1, WSP030.1.R3(12), WSP030.2.R3(12)

- 1 FTT
- 2 SNAPRITE
- 3 MMT
- 4 SWEATING GUARDED HOT PLATE
- 5 ROTAWASH
- 6 AIRPERM
- 7 ROTAPILL PILLING AND SNAGGING TESTER
- 8 9-HEAD MARTINDALE
- 9 PNUBURST
- 10 UNIVERSAL TENSILE TESTER, 5K ST
- 11 HYDROSTATIC HEAD TESTER
- 12 POWERTEAR
- 13 CROCKMETER AND ELECTRONIC CROCKMETER
- 14 PILLGRADE
- 15 QUICKWASH PLUS
- 16 RANDOM TUMBLE
- 17 LAUNDER-OMETER
- 18 THERMARATE
- 19 AUTOBURST
- 20 BUNDESMANN WATER REPELLENCY TESTER
- 21 RAIN TESTER
- 22 AUTO FLAMM
- 23 VERTICAL FLAMMABILITY CHAMBER
- 24 AFC 45° AUTOMATIC FLAMMABILITY TESTER
- 25 SCORCH TESTER
- 26 UWT, UNIVERSAL WEAR TESTER
- 27 OZONE EXPOSURE CHAMBER
- 28 GAS FUME CHAMBER
- 29 COLORCHEX COLOR ASSESSMENT CABINET
- 30 CONSUMABLES

20



VIEW DETAILS

Bundesmann Water Repellency Tester

M230B

The Bundesmann provides a water repellency test for fabrics that are being contacted during use such as a rain jacket. Samples are mounted over a cup and are rubbed from underneath during the test. Three hundred precision stainless steel drop formers provide simulated rain falling from a height of 150 cm. Samples mount onto holders outside of the tester and then are easily set in place on top of the cups.

DIMENSIONS 780 MM X 760 MM X 2100 MM

WEIGHT 177 KG

STANDARDS

BS EN 29865, DIN EN 29865, ISO 9865,
GB/T 14577, NF G07-058

- 1 FTT
- 2 SNAPRITE
- 3 MMT
- 4 SWEATING GUARDED HOT PLATE
- 5 ROTAWASH
- 6 AIRPERM
- 7 ROTAPILL PILLING AND SNAGGING TESTER
- 8 9-HEAD MARTINDALE
- 9 PNUBURST
- 10 UNIVERSAL TENSILE TESTER, 5K ST
- 11 HYDROSTATIC HEAD TESTER
- 12 POWERTEAR
- 13 CROCKMETER AND ELECTRONIC CROCKMETER
- 14 PILLGRADE
- 15 QUICKWASH PLUS
- 16 RANDOM TUMBLE
- 17 LAUNDER-OMETER
- 18 THERMARATE
- 19 AUTOBURST
- 20 BUNDESMANN WATER REPELLENCY TESTER
- 21 RAIN TESTER**
- 22 AUTO FLAMM
- 23 VERTICAL FLAMMABILITY CHAMBER
- 24 AFC 45° AUTOMATIC FLAMMABILITY TESTER
- 25 SCORCH TESTER
- 26 UWT, UNIVERSAL WEAR TESTER
- 27 OZONE EXPOSURE CHAMBER
- 28 GAS FUME CHAMBER
- 29 COLORCHEX COLOR ASSESSMENT CABINET
- 30 CONSUMABLES

21



VIEW DETAILS

Rain Tester

M230D

The Rain Tester provides a water repellency test for fabrics with different intensities of water impact at specified water temperature. Samples are mounted vertically while the simulated rain is sprayed horizontally. Samples are backed with a standard blotting paper that is weighed before and after the test. The Rain Tester provides precise control of the test through a color touch screen controller including water column height, water temperature, and test time.

DIMENSIONS 700 MM X 600 MM X 24600 MM

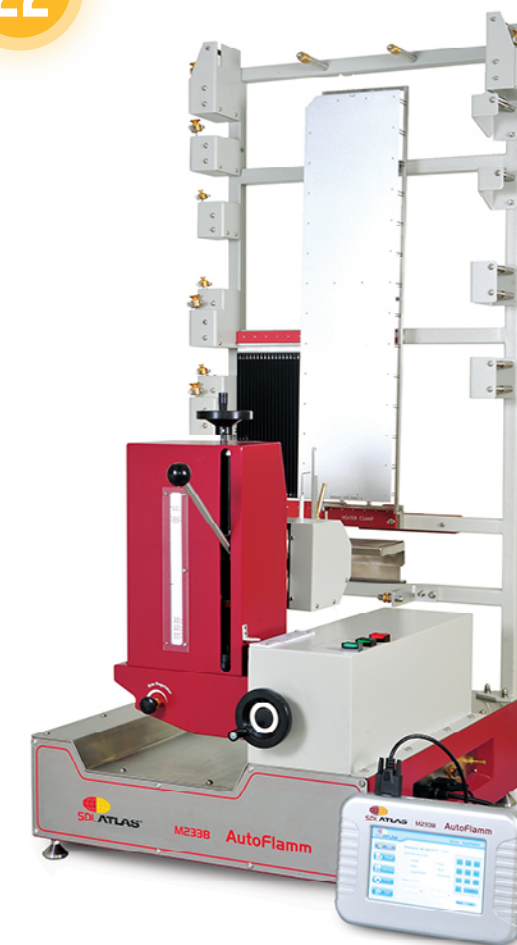
WEIGHT 125 KG

STANDARDS

AATCC 35, BS EN ISO 22958, GB/T 23221

- 1 FTT
- 2 SNAPRITE
- 3 MMT
- 4 SWEATING GUARDED HOT PLATE
- 5 ROTAWASH
- 6 AIRPERM
- 7 ROTAPILL PILLING AND SNAGGING TESTER
- 8 9-HEAD MARTINDALE
- 9 PNUBURST
- 10 UNIVERSAL TENSILE TESTER, 5K ST
- 11 HYDROSTATIC HEAD TESTER
- 12 POWERTEAR
- 13 CROCKMETER AND ELECTRONIC CROCKMETER
- 14 PILLGRADE
- 15 QUICKWASH PLUS
- 16 RANDOM TUMBLE
- 17 LAUNDER-OMETER
- 18 THERMARATE
- 19 AUTOBURST
- 20 BUNDESMANN WATER REPELLENCY TESTER
- 21 RAIN TESTER
- 22 AUTO FLAMM
- 23 VERTICAL FLAMMABILITY CHAMBER
- 24 AFC 45° AUTOMATIC FLAMMABILITY TESTER
- 25 SCORCH TESTER
- 26 UWT, UNIVERSAL WEAR TESTER
- 27 OZONE EXPOSURE CHAMBER
- 28 GAS FUME CHAMBER
- 29 COLORCHEX COLOR ASSESSMENT CABINET
- 30 CONSUMABLES

22



VIEW DETAILS

Auto Flamm

M233B

Many European and ISO flammability tests require apparel fabrics and vertically oriented fabrics to be tested with an instrument such as the AutoFlamm. This includes home textiles such as curtains or drapes and bedding or table cloths that will hang down from some furniture. This automated instrument has a motor driven gas burner and micro switches activated by trip threads. The AutoFlamm has clearly marked settings for the most common standards for easy set up. The handheld touchscreen controller has all of the most popular standards preprogrammed. An optional radiator assembly can also be added to meet BS EN 13772.

DIMENSIONS 560 MM X 650 MM X 1250 MM

WEIGHT 100 KG

STANDARDS

BS EN 13722: 2003, BS 5438:1976 TEST 1 & 2, BS 5438:1976 TEST 3, BS 5438:1989 TEST 2, EN ISO 15025:2002, EN ISO 6940:1995, EN ISO 6940:2004, EN ISO 6941:1995 & 2003, EN ISO 6941:2003, EN 1101:1995, EN 1102:1995, EN 1103:1995

- 1 FTT
- 2 SNAPRITE
- 3 MMT
- 4 SWEATING GUARDED HOT PLATE
- 5 ROTAWASH
- 6 AIRPERM
- 7 ROTAPILL PILLING AND SNAGGING TESTER
- 8 9-HEAD MARTINDALE
- 9 PNUBURST
- 10 UNIVERSAL TENSILE TESTER, 5K ST
- 11 HYDROSTATIC HEAD TESTER
- 12 POWERTEAR
- 13 CROCKMETER AND ELECTRONIC CROCKMETER
- 14 PILLGRADE
- 15 QUICKWASH PLUS
- 16 RANDOM TUMBLE
- 17 LAUNDER-OMETER
- 18 THERMARATE
- 19 AUTOBURST
- 20 BUNDESMANN WATER REPELLENCY TESTER
- 21 RAIN TESTER
- 22 AUTO FLAMM
- 23 VERTICAL FLAMMABILITY CHAMBER
- 24 AFC 45° AUTOMATIC FLAMMABILITY TESTER
- 25 SCORCH TESTER
- 26 UWT, UNIVERSAL WEAR TESTER
- 27 OZONE EXPOSURE CHAMBER
- 28 GAS FUME CHAMBER
- 29 COLORCHEX COLOR ASSESSMENT CABINET
- 30 CONSUMABLES

23



VIEW DETAILS

Vertical Flammability Chamber

M233M

Vertical Flammability Chamber for measuring the vertical flame spread for children's sleepwear, fabrics, other textile materials or resilient filling materials used in upholstered furniture. Comprises a draft free stainless steel cabinet with glass observation panel window and back wall painted black for easy test viewing. Specimen holders, burner and associated hardware are dependent on the test standard and must be specified. Separate enclosure for manual gas controls is located away from the flame chamber for operator convenience.

DIMENSIONS 330 MM X 360 MM X 836 MM

WEIGHT 38 KG

STANDARDS

ASTM D6413, CALIF TB-117, 16 CFR PARTS 1615, 16 CFR PARTS 1616, GB/T 5455

FLAMMABLES

WET

- 1 FTT
- 2 SNAPRITE
- 3 MMT
- 4 SWEATING GUARDED HOT PLATE
- 5 ROTAWASH
- 6 AIRPERM
- 7 ROTAPILL PILLING AND SNAGGING TESTER
- 8 9-HEAD MARTINDALE
- 9 PNUBURST
- 10 UNIVERSAL TENSILE TESTER, 5K ST
- 11 HYDROSTATIC HEAD TESTER
- 12 POWERTEAR
- 13 CROCKMETER AND ELECTRONIC CROCKMETER
- 14 PILLGRADE
- 15 QUICKWASH PLUS
- 16 RANDOM TUMBLE
- 17 LAUNDER-OMETER
- 18 THERMARATE
- 19 AUTOBURST
- 20 BUNDESMANN WATER REPELLENCY TESTER
- 21 RAIN TESTER
- 22 AUTO FLAMM
- 23 VERTICAL FLAMMABILITY CHAMBER
- 24 AFC 45° AUTOMATIC FLAMMABILITY TESTER
- 25 SCORCH TESTER
- 26 UWT, UNIVERSAL WEAR TESTER
- 27 OZONE EXPOSURE CHAMBER
- 28 GAS FUME CHAMBER
- 29 COLORCHEX COLOR ASSESSMENT CABINET
- 30 CONSUMABLES

24



VIEW DETAILS

AFC 45° Automatic Flammability Tester

M233G

To determine the burning characteristics of textiles under controlled conditions. Stainless steel test cabinet with glass observation panel provided with automatic timing of flame spread in 0.1 second increments from ignition. Automatic or manual flame impingement for 1, 5 or 20 seconds. Brushing Device including Nylon Brush is available per request.

DIMENSIONS 420 MM X 260 MM X 526 MM

WEIGHT 27 KG

STANDARDS

ASTM D1230, CALIFTB 117, CFR16-1610,
FTMS 191-5908, NFPA 702, GB/T 14644

- 1 FTT
- 2 SNAPRITE
- 3 MMT
- 4 SWEATING GUARDED HOT PLATE
- 5 ROTAWASH
- 6 AIRPERM
- 7 ROTAPILL PILLING AND SNAGGING TESTER
- 8 9-HEAD MARTINDALE
- 9 PNUBURST
- 10 UNIVERSAL TENSILE TESTER, 5K ST
- 11 HYDROSTATIC HEAD TESTER
- 12 POWERTEAR
- 13 CROCKMETER AND ELECTRONIC CROCKMETER
- 14 PILLGRADE
- 15 QUICKWASH PLUS
- 16 RANDOM TUMBLE
- 17 LAUNDER-OMETER
- 18 THERMARATE
- 19 AUTOBURST
- 20 BUNDESMANN WATER REPELLENCY TESTER
- 21 RAIN TESTER
- 22 AUTO FLAMM
- 23 VERTICAL FLAMMABILITY CHAMBER
- 24 AFC 45° AUTOMATIC FLAMMABILITY TESTER
- 25 SCORCH TESTER
- 26 UWT, UNIVERSAL WEAR TESTER
- 27 OZONE EXPOSURE CHAMBER
- 28 GAS FUME CHAMBER
- 29 COLORCHEX COLOR ASSESSMENT CABINET
- 30 CONSUMABLES

25



[VIEW DETAILS](#)

Scorch Tester

M247

The Scorch Tester determines color fastness and shrinkage to hot pressing and dry heat. This instrument is available in two different hot plate sizes. The top plate has a unique hinge and spring pin design to ensure even pressure across the sample. Each plate temperature is individually controlled and a timer is also integrated with the device.

DIMENSIONS 250 MM X 300 MM X 400 MM

WEIGHT 17 KG

STANDARDS

AATCC 92, AATCC 114, AATCC 117, AATCC 133, GB/T 5718, GB/T 6152, ISO 105-P01, ISO105-X11, JIS L 0850, JIS L 0879

FLAMMABLES

WET

- 1 FTT
- 2 SNAPRITE
- 3 MMT
- 4 SWEATING GUARDED HOT PLATE
- 5 ROTAWASH
- 6 AIRPERM
- 7 ROTAPILL PILLING AND SNAGGING TESTER
- 8 9-HEAD MARTINDALE
- 9 PNUBURST
- 10 UNIVERSAL TENSILE TESTER, 5K ST
- 11 HYDROSTATIC HEAD TESTER
- 12 POWERTEAR
- 13 CROCKMETER AND ELECTRONIC CROCKMETER
- 14 PILLGRADE
- 15 QUICKWASH PLUS
- 16 RANDOM TUMBLE
- 17 LAUNDER-OMETER
- 18 THERMARATE
- 19 AUTOBURST
- 20 BUNDESMANN WATER REPELLENCY TESTER
- 21 RAIN TESTER
- 22 AUTO FLAMM
- 23 VERTICAL FLAMMABILITY CHAMBER
- 24 AFC 45° AUTOMATIC FLAMMABILITY TESTER
- 25 SCORCH TESTER
- 26 UWT, UNIVERSAL WEAR TESTER
- 27 OZONE EXPOSURE CHAMBER
- 28 GAS FUME CHAMBER
- 29 COLORCHEX COLOR ASSESSMENT CABINET
- 30 CONSUMABLES

26



[VIEW DETAILS](#)

UWT, Universal Wear Tester M282

The UWT is used to test wear and abrasion resistance of fabrics for apparel, shoes, upholstery, automotive, and many other areas. The instrument, also known as a Stoll Quartermaster Abrasion Tester is designed to run numerous tests with five different possible setups.

DIMENSIONS 330 MM X 500 MM X 460 MM

WEIGHT 46 KG

STANDARDS

ATTC 119, AATCC 120, ASTM D3154, ASTM D3885, ASTM D3886, FED-STD-191A-5300, FED-STD-191A-5302, FED-STD-191A-5303, FLTM BN 112-01, FLTM BN 112-03, FZ/T 01121, HYUNDAI/KIA MS 200-20, IST 20.1 (01) 3.1, IST 20.2 (01) 3.9, WSP 020.1.R3 (12), WSP 020.2.R3 (12)

- 1 FTT
- 2 SNAPRITE
- 3 MMT
- 4 SWEATING GUARDED HOT PLATE
- 5 ROTAWASH
- 6 AIRPERM
- 7 ROTAPILL PILLING AND SNAGGING TESTER
- 8 9-HEAD MARTINDALE
- 9 PNUBURST
- 10 UNIVERSAL TENSILE TESTER, 5K ST
- 11 HYDROSTATIC HEAD TESTER
- 12 POWERTEAR
- 13 CROCKMETER AND ELECTRONIC CROCKMETER
- 14 PILLGRADE
- 15 QUICKWASH PLUS
- 16 RANDOM TUMBLE
- 17 LAUNDER-OMETER
- 18 THERMARATE
- 19 AUTOBURST
- 20 BUNDESMANN WATER REPELLENCY TESTER
- 21 RAIN TESTER
- 22 AUTO FLAMM
- 23 VERTICAL FLAMMABILITY CHAMBER
- 24 AFC 45° AUTOMATIC FLAMMABILITY TESTER
- 25 SCORCH TESTER
- 26 UWT, UNIVERSAL WEAR TESTER
- 27 OZONE EXPOSURE CHAMBER
- 28 GAS FUME CHAMBER
- 29 COLORCHEX COLOR ASSESSMENT CABINET
- 30 CONSUMABLES

27



[VIEW DETAILS](#)

Ozone Exposure Chamber

M287B

The Ozone Exposure Chamber provides a safe and reliable test environment to check textiles for colorfastness to ozone. The instrument includes a high output ozone generator, a touch screen controller, and closed loop control of the ozone concentration in the chamber. Up to twenty four specimens can be mounted on the rotating rack. The unit does not require a fume hood or exhaust piping because all exhaust from chamber passes through an ozone scrubber. For additional safety of the user, the chamber door has safety interlock so it can't be opened until the ozone is cleared and a negative chamber air pressure is maintained to ensure there are no leaks. User interface available in English, Spanish, Turkish, and Chinese.

DIMENSIONS 265 MM X 240 MM X 457 MM

WEIGHT 20 KG

STANDARDS

AATCC 109, GB/T 11039.3, ISO 105-G03

- 1 FTT
- 2 SNAPRITE
- 3 MMT
- 4 SWEATING GUARDED HOT PLATE
- 5 ROTAWASH
- 6 AIRPERM
- 7 ROTAPILL PILLING AND SNAGGING TESTER
- 8 9-HEAD MARTINDALE
- 9 PNUBURST
- 10 UNIVERSAL TENSILE TESTER, 5K ST
- 11 HYDROSTATIC HEAD TESTER
- 12 POWERTEAR
- 13 CROCKMETER AND ELECTRONIC CROCKMETER
- 14 PILLGRADE
- 15 QUICKWASH PLUS
- 16 RANDOM TUMBLE
- 17 LAUNDER-OMETER
- 18 THERMARATE
- 19 AUTOBURST
- 20 BUNDESMANN WATER REPELLENCY TESTER
- 21 RAIN TESTER
- 22 AUTO FLAMM
- 23 VERTICAL FLAMMABILITY CHAMBER
- 24 AFC 45° AUTOMATIC FLAMMABILITY TESTER
- 25 SCORCH TESTER
- 26 UWT, UNIVERSAL WEAR TESTER
- 27 OZONE EXPOSURE CHAMBER
- 28 GAS FUME CHAMBER
- 29 COLORCHEX COLOR ASSESSMENT CABINET
- 30 CONSUMABLES

28



[VIEW DETAILS](#)

Gas Fume Chamber

M291

The Gas Fume Chamber tests the color fastness of textiles when exposed to atmospheric oxides of nitrogen caused by the combustion of gases. The instrument is equipped with a Bunsen burner and rotating rack. As the testing occurs over an extended time in an unobserved environment, a number of mechanisms have been incorporated to insure the safety of the operator including gas pressure regulation, unburnt gas detectors, extinguished flame alarm, and an interlocked flame ignition system among others.

DIMENSIONS 780 MM X 670 MM X 1100 MM

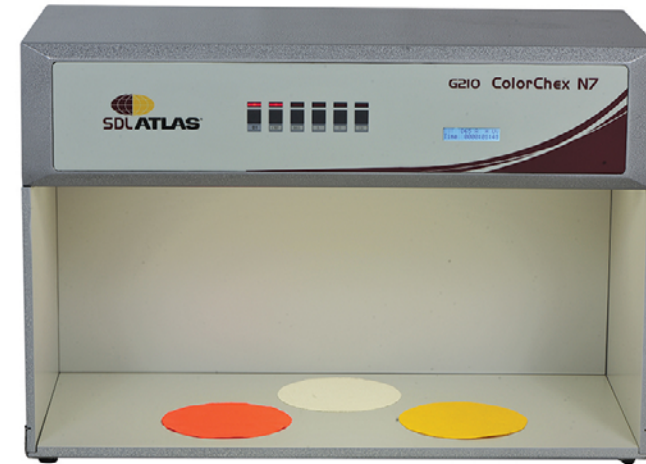
WEIGHT 140 KG

STANDARDS

AATCC 23, GB/T11039, ISO 105-G02

- 1 FTT
- 2 SNAPRITE
- 3 MMT
- 4 SWEATING GUARDED HOT PLATE
- 5 ROTAWASH
- 6 AIRPERM
- 7 ROTAPILL PILLING AND SNAGGING TESTER
- 8 9-HEAD MARTINDALE
- 9 PNUBURST
- 10 UNIVERSAL TENSILE TESTER, 5K ST
- 11 HYDROSTATIC HEAD TESTER
- 12 POWERTEAR
- 13 CROCKMETER AND ELECTRONIC CROCKMETER
- 14 PILLGRADE
- 15 QUICKWASH PLUS
- 16 RANDOM TUMBLE
- 17 LAUNDER-OMETER
- 18 THERMARATE
- 19 AUTOBURST
- 20 BUNDESMANN WATER REPELLENCY TESTER
- 21 RAIN TESTER
- 22 AUTO FLAMM
- 23 VERTICAL FLAMMABILITY CHAMBER
- 24 AFC 45° AUTOMATIC FLAMMABILITY TESTER
- 25 SCORCH TESTER
- 26 UWT, UNIVERSAL WEAR TESTER
- 27 OZONE EXPOSURE CHAMBER
- 28 GAS FUME CHAMBER
- 29 COLORCHEX COLOR ASSESSMENT CABINET
- 30 CONSUMABLES

29



[VIEW DETAILS](#)

ColorChex Color Assessment Cabinet G210

Cost saving alternative for your Assessment Cabinet requirements. New high specification/low cost option to conventional light booths. With illuminant A and Horizon sunlight as standard, 3 other fluorescent light sources can also be specified, including D65 (CRI 98), TLD84 and UV. Light booths comply with BS 950 Part 1 and 16 CIES. X0.12. Preset with programmable-sequence lighting and individual lighting life record function. Optional selection for remote control function of light source selection.

DIMENSIONS 1300 MM X 630 MM X 810 MM

WEIGHT 70 KG

STANDARDS

ISO 105-C01 / C02 / C03 / C04 / C05 / C06 / C07 / C08 / C09 / X11 ASTM D1729 BS 950 PART 1, NEXT 1 / 2 / 3 / 3A / 4 / 4A / 5 / 6 / 7 / 7A / 7B / 9 / 9A / 10 / 18A / 18B, ANSI ANSI CIES 16 CIES.X0.12, AATCC 8 / 15 / 16 / 23 / 61 / 109 / 116 / 117 / 132 / 133 / 190

- 1 FTT
- 2 SNAPRITE
- 3 MMT
- 4 SWEATING GUARDED HOT PLATE
- 5 ROTAWASH
- 6 AIRPERM
- 7 ROTAPILL PILLING AND SNAGGING TESTER
- 8 9-HEAD MARTINDALE
- 9 PNUBURST
- 10 UNIVERSAL TENSILE TESTER, 5K ST
- 11 HYDROSTATIC HEAD TESTER
- 12 POWERTEAR
- 13 CROCKMETER AND ELECTRONIC CROCKMETER
- 14 PILLGRADE
- 15 QUICKWASH PLUS
- 16 RANDOM TUMBLE
- 17 LAUNDER-OMETER
- 18 THERMARATE
- 19 AUTOBURST
- 20 BUNDESMANN WATER REPELLENCY TESTER
- 21 RAIN TESTER
- 22 AUTO FLAMM
- 23 VERTICAL FLAMMABILITY CHAMBER
- 24 AFC 45° AUTOMATIC FLAMMABILITY TESTER
- 25 SCORCH TESTER
- 26 UWT, UNIVERSAL WEAR TESTER
- 27 OZONE EXPOSURE CHAMBER
- 28 GAS FUME CHAMBER
- 29 COLORCHEX COLOR ASSESSMENT CABINET
- 30 CONSUMABLES

30

Test Materials

VARIOUS



SDL Atlas offers the broadest range of testing consumables in the textile and home appliance testing markets. All of the consumables we sell are of the highest quality and meet important international standards. We start with our own line of Textile Innovators consumables that covers textile testing needs such as multifibers for wash fastness tests, crocking supplies, make weights, pilling supplies, and more. Textile Innovators also has a large selection of consumables for home appliance testing. These include DOE energy cloth, soil cloth, and standard carpet panels as a few examples.

[VIEW DETAILS](#)

DIMENSIONS VARIOUS

WEIGHT VARIOUS